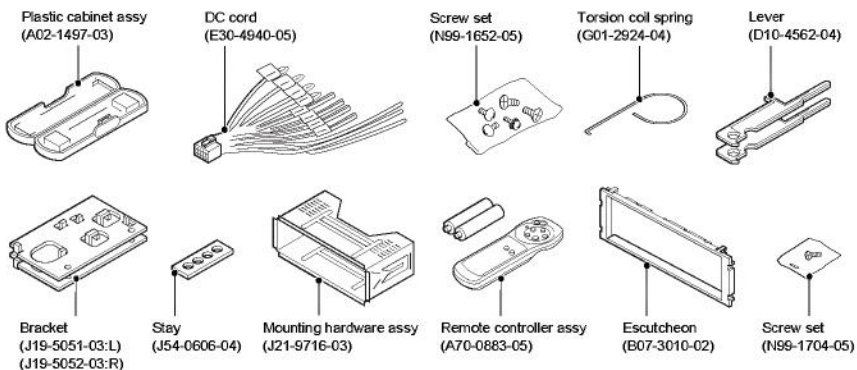
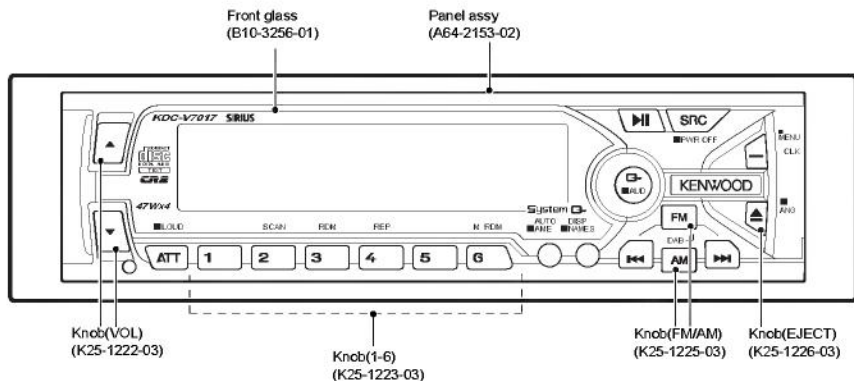


KDC-V7017

SERVICE MANUAL

KENWOOD

© 2001-1 PRINTED IN JAPAN
B51-7720-00(S) 1529



KDC-V7017

SPECIFICATIONS

FM Section

Frequency Range	87.9MHz~107.9MHz
(Frequency Step)	(200kHz)
Channel Space Selection	50k/200kHz
Usable Sensitivity(S/N:30dB)	9.3dBf(0.8 μ V/75 Ω)
Quieting Sensitivity(S/N:50dB)	15.2dBf(1.6 μ V/75 Ω)
Frequency Response(\pm 3.0dB)	30Hz~15kHz
S/N	70dB(MONO)
Selectivity	> 80dB(\pm 400kHz)
Stereo Separation	40dB(1kHz)

AM Section

Frequency Range	530kHz~1700kHz
(Frequency Step)	(10kHz)
Channel Space Selection	9k/10kHz
Usable Sensitivity(S/N:20dB)	28dB μ (25 μ V)

CD Section

Laser Diode	GaAlAs(λ =780nm)
Digital Filter(D/A)	8 Times Over Sampling
D/A Converter	1Bit
Spindle Speed	500~200(CLV)
Wow & Flutter	Below Measurable Limit
Frequency Response	10~20kHz(\pm 1dB)
Total Harmonic Distortion	0.01%(1kHz)
S/N Ratio	105dB(1kHz)
Dynamic Range	93dB
Channel Separation	85dB

AMPLIFIER Section

Preout Level/Load	1800mV/10k Ω (CD/CD-CH)
Preout Impedance	\leq 600 Ω
Maximum Power	47W \times 4
Full Bandwidth Power (at less than 1%THD)	22W \times 4

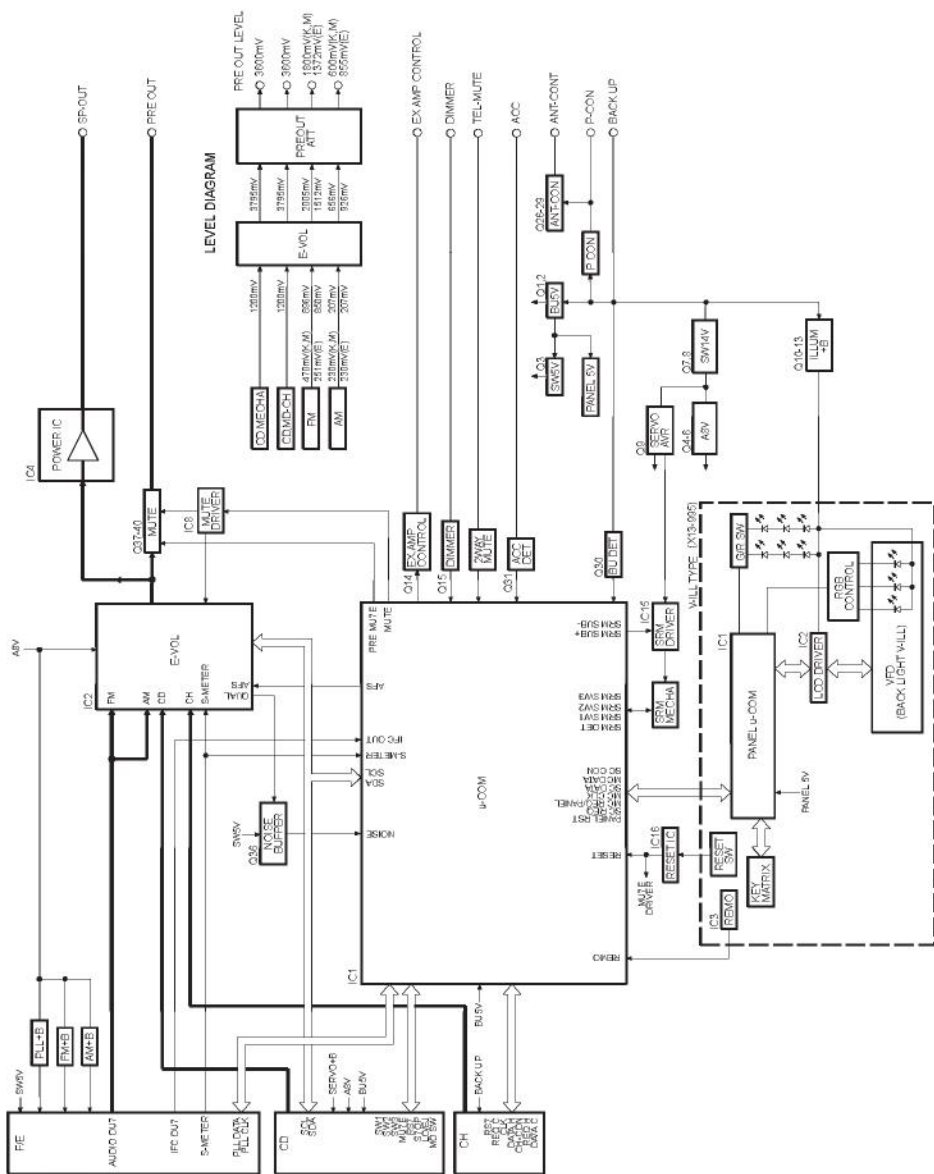
TONE Section

Bass	100Hz \pm 10dB
Middle	1kHz \pm 10dB
Treble	10kHz \pm 10dB

General

Operating Voltage	14.4V
(11V~16V allowable)	
Current Consumption	10A
Installation Size (W)	182mm(7-3/16in)
(H)	53mm(2-1/16in)
(D)	162mm(6-3/8in)
Weight	1.9kg(4.2lbs)

BLOCK DIAGRAM



MICROCOMPUTER'S TERMINAL DESCRIPTION

System μ -com: UPD703033GC052

●Terminal description

Pin	Function	I/O	Description	Processing Operation
1	AM+B	O	AM power terminal	H: During AM radio operation
2	FM+B	O	FM power terminal	H: During FM radio operation H: During FM radio operation if with RDS, RBDS
3	AFS	O	Switching terminal for noise detection	L: During AF search, FM seek H: During receive
4	PLL-DATA	I/O	Data I/O terminal to F/E	
5	PLL-CLK	I/O	CLK terminal to F/E	
6	Evdd	-	Positive power terminal	
7	Evss	-	GND terminal	
8	N.C	O	Open (not used)	
9	BEEP	O	BEEP output terminal	
10	N.C	O	Open (not used)	
11	PRE-MUTE L	O		L (during CD): when M MUTE L is L (low) L during momentary power down Fixed at H only during 2 zone
12	PRE-MUTE R	O		L (during CD): when M MUTE R is L (low) L during momentary power down Fixed at H only during 2 zone
13	IC2-SDA	I/O	IC2, IC5, CD mechanism, DATA line	
14	IC2-SCL	O	IC2, IC5, CD mechanism, CLK line	
15	N.C	O	Open (not used)	
16	N.C	O	Open (not used)	
17	N.C	O	Open (not used)	
18	TEST	-	Test terminal	
19	P-MUTE	O	Power IC MUTE terminal	L: During Power-OFF L: During All-OFF L: During Tell-mute
20	P-STBY	O	Power IC STBY terminal	Power IC ON: H. Power IC OFF: L. During All-OFF: H
21	MUTE	O	MUTE terminal	ON: Open OFF: L
22	N.C	O	Open (not used)	
23	N.C	O	Open (not used)	
24	ACC-DET	I	ACC detection terminal	L: ACC H: No ACC
25	DIMMER	I	Small detection terminal	ON: L OFF: H
26	SW5V	O	5 volt power terminal	ON: L OFF: H
27	EXT-AMP-CO	O	External AMP control terminal (200ms)	L 40ms: Bus boost OFF L 70ms: Bus boost LOW L 100ms: Bus boost HI
28	P-CON	O	Power control terminal	Power ON: H Power OFF: L
29	ANT-CON	O	Antenna control terminal	TUNER, TI ON: H Open if no ANT-CON
30	P-ON	O	SW14V control terminal	Power ON: H Power OFF: L
31	RESET	I	Reset IN terminal	H: Normally H: During reset
32	XT1	I	Subclock terminal	Time count Operation during Power-OFF
33	XT2	-	Subclock terminal	
34	REGC	-	Capacitor output terminal for regulator inside microprocessor	
35	X2	-	Main clock terminal	Oscillates: During Power-ON Oscillates stop: During Power-OFF, during momentary power down
36	X1	I	Main clock terminal	
37	Vss	-	GND terminal	
38	Vdd	-	+B terminal	
39	CLKOUT	O	Internal system clock output	
40	N.C	O	Open (not used)	
41	N.C	O	Open (not used)	
42	TYPE0	I	Destination selector port	
43	TYPE1	I	Destination selector port	
44	TYPE2	I	Destination selector port	
45	N.C	O	Open (not used)	
46	IC2TYPE0	I	IC2 destination terminal	L: During default

MICROCOMPUTER'S TERMINAL DESCRIPTION

Pin	Function	I/O	Description	Processing Operation
47	IC2TYPE1	I	IC2 destination terminal	L: During default
48	CH-REQH	O	Request output to changer	
49	CH-RST	O	Reset output to changer	Normally L, after system RST reset is "H" for 400ms and then "L"
50	CH-MUTE	I	Mute request from changer	ON: H OFF: L
51	CH-CON	O	Changer control output	ON: H OFF: L
52	ILL-ON	O	FL, illumination output	ON: H OFF: L
53	M-MUTE L	I	Mute request from CD mechanism	ON: L
54	M-MUTE R	I	Mute request from CD mechanism	ON: L
55	BVdd	-	+B terminal	
56	BVss	-	GND terminal	
57	M-RST	O	Reset output to CD mechanism	Normally H, L: During reset Per mechanical control specs.
58	M-STOP	O	Stop request to CD mechanism	Stop: L H: During CD
59	N.C	O	Open (not used)	
60	LO/EJ	I/O	CD mechanism, LODING, EJECT selector	Stop, Brake: Hi-z, LOADING: L, EJECT: H
61	MOSW	O	CD mechanism, MOTOR, SW	LOADING, EJECT, Brake: H
62	N.C	O	Open (not used)	
63	CD-SW3	I	CD down SW detection terminal	Chucking: H
64	PAN-RESET	O	Reset output to panel microprocessor	Normally H, L: During reset, momentary power down
65	MC-REQ/PAN	I/O	REQ terminal/panel detection for panel microprocessor	L: During panel use
66	N.C	O	Open (not used)	
67	N.C	O	Open (not used)	
68	N.C	O	Open (not used)	
69	N.C	O	Open (not used)	
70	AVCONT	O	AD reference voltage control output	Same timing as P ON H: During operation
71	Avdd	-	+B terminal	
72	Avss	-	GND terminal	
73	Avref	I	Reference voltage supply terminal for A/D converter	
74	PHONE	I	PHONE detection terminal	Tel mute: Min 1 volt, Navi mute: Max 2.5 volt
75	SRM-SW3	I	Mask mechanism position detection input	See 01mask mechanical position detection chart
76	SRM-SW1	I	Mask mechanism position detection input	See 01mask mechanical position detection chart
77	SRM-SW2	I	Mask mechanism position detection input	See 01mask mechanical position detection chart
78	SRM-DET	I	Mask mechanism detection input	L: Mechanism H: No mechanism
79	NOISE	I	FM noise detection terminal	
80	S-METER	I	S meter detection terminal	
81	R-DATA	I	RDS DECODER DATA input terminal	Connect to GND: On models without RDS, RBDS
82	R-QUAL	I	RDS DECODER QUAL input terminal	Connect to GND: On models without RDS, RBDS
83	IFC-OUT	I	F/E IFC OUT input terminal	L: When station present
84	N.C	I	Open (not used)	Connect to GND
85	N.C	I	Open (not used)	Connect to GND
86	SRM-B	O	SRM mechanical submotor output terminal	
87	R-CLK	I	RDS DECODER CLK input terminal	Connect to GND: On models without RDS, RBDS
88	CH-REQC	I	Input request from changer	ON: L
89	SC-REQ	I	Communication request from panel microprocessor	
90	CD-SW1	I	LOADING SW detection terminal	LOADING start: L
91	CD-SW2	I	12cm disk detection switch terminal	12cm DISC: L
92	SRM+B	O	SRM mechanical submotor output terminal	
93	BU-DET	I	Momentary power down detection terminal	L: B.U H: No B.U (momentary power down)
94	CH-DATAC	I	Data input terminal from changer	
95	CH-DATAH	O	Data input terminal to changer	
96	CH-CLK	I/O	CLK I/O terminal used with changer	
97	SC-DATA	I	Data line from panel microprocessor	
98	MC-DATA	I/O	Data line to panel microprocessor	
99	MC-CLK	O	CLK terminal to panel microprocessor	
100	PAN5V	O	Panel 5 volt control terminal	L: Panel H: No panel

ADJUSTMENT

Test Mode**1. How to enter test mode**

While holding the FM key and the Preset 6 key, reset the unit.

2. How to exit from test mode.

While holding down the Preset 6 key, reset the unit.

Note: Does not exit from test mode ACC-OFF, Power-OFF or Momentary power down

3. Test mode reset status

- Sources are all OFF
- All display segment lit up
- Volume at -10dB (shows 30 on display)
- LOUD is OFF.
- CRSC is OFF regardless of whether switching function is provided.
- SYSTEM Q is in FLAT
- Blank skip is OFF. (C/R model)
- LEDs are white, no scanning. (VLCD model)

4. Special displays in Tuner

When the following displays appear in tuner mode it shows a problem with the front end.

- "TNE2P NG" F/E is not aligned and EEPROM is in reset (no settings) such as when shipped.
- "TNCON NG" Cannot communicate with F/E (front end).

5. K3I switching

Each time the Preset 6 key is pressed in Tuner mode, switches one at a time through the following sequence: AUTO → Forced Wide → Forced Middle → Forced Narrow → AUTO. When reset, displays the following in AUTO.

- AUTO FMA
- Forced Wide FMW
- Forced Middle ... FMM
- Forced Narrow ... FMN

6. CD receiver test mode specifications

- No automatic ejection during reset-start. Does not make a CD check in reset with a CD loaded.
- Using the Track up key jumps to the following tracks.
No.9→No.15→No.10→No.11→No.12→No.13→No.14→and back to No. 9
- Using the Track down key moves 1 track downwards from the track being played.

7. Audio items

- Momentarily pressing the Q key calls up audio adjustment mode.
- Pressing the * key on the remote control calls up audio alignment mode.
- Continuous forward is disabled on the remote control.
- Bass/Middle/Treble are settable in 3 steps of MIN/CENTER/MAX with the Track up/down keys.

- Balance is settable in 3 steps of Left MAX/CENTER/Right MAX with the Track up/down keys.
- Fader is settable in 3 steps of Rear MAX/CENTER/Front MAX with the Track up/down keys.
- HPF is settable in 2 steps of THRU/220Hz with the Track up/down keys.
- LPF is settable in 2 steps of THRU/120Hz with the Track up/down keys.
- Bass f/Bass Q/Bass EXT/Middle f/Middle Q/Treble f do not appear in the audio alignment.

8. Menu items

- Momentarily pressing the CLK key calls up the Menu mode.
- The DNPP/SBF keys on the remote control calls up Menu mode.
- Continuous forward is disabled on the remote control.
- Calendar adjust, calendar display switching and calendar memo are eliminated from forward (FL model)
- In color alignment mode, Preset 1 is red, 2 is blue, 3 is green and 4 is white. (VLCD model).
- Contrast is set in 3 steps of 0, 5, 10 and the reset value is 5. (VLCD/LCD models)
- Brightness adjustment is set in 3 steps of 0, 5, 10 and the reset value is 10. (Normal FL model)

9. Backup current measurement

The MUTE terminal turns off 2 seconds (not 15 seconds) after being reset in ACC off (backup on). (The panel, CD and tape mechanisms are disabled during this time.)

10. Special displays during All-Off with all lamps on

The following displays appear when the preset keys are pressed with all display segment lit up.

PRESET1	Version display (8 digits; Mo. Dy. Hr. Mn.) (Display) SYS XXXXXXXX system microprocessor PAN XXXXXXXX panel microprocessor
PRESET2	Serial No. display (8 digits) Note: CD/RK type eXcelon model (Display) SNo XXXXXXXX
PRESET3	Press once: Power-on time display (Does not count during All-Off) Press long: Clears the time display during power-on. (Display) PonTim XXXXX (C/R) MAX 65535(time)
PRESET4	Press once: TAPE/CD/MD operating time display. Press long: Clears TAPE/CD/MD operating time. (Display) CDTime XXXXX (C/D/R) TapTim XXXXX (C/R) MAX 65535(time)
PRESET5	Press once: TAPE/CD/MD eject count display. Press long: Clears TAPE/CD/MD eject count display. (Display) EjeTim XXXXX MAX 65535(count)
PRESET6	Press once: PANEL open/shut count display. Press long: Clears PANEL open/shut count display. (Display) PhCnt XXXXX MAX 65535(count)

ADJUSTMENT

11. Others

- Automatic panel close is disabled when tape or CD is inserted. (M&T model)
- Panel operation is disabled at Power-ON or Power-OFF. (M&T model)
- Panel open and closes with the ATT key. (M&T model)
- No displays such as "CODE OFF" during Power-ON.
- Pressing the TI (AUTO) key during changer operation turns on 2zone. Cancel by pressing the TI (AUTO) key again. The P/S dot is lit during 2zone.
- Pressing the CLK key for 1 second or more during All OFF, calls up the Mask Key (security) write mode.

Security items

• Forced power-ON mode (all models)

Even when writing is permitted by the security function (mask key), Power-on can be set for a 30 minute period each time the reset key is pressed while holding down the ATT key and Preset 4 keys. After 30 minutes elapses, can only be restored by using reset.

• How to register the security code for EEPROM (F/E) replacement (coded security models)

1. While holding the FM key and the preset 6 key, reset the unit.
2. Call up security register mode by pressing the CLK key.
3. Enter the code with the Preset 1/2/3/4 keys.
For example, to enter the number, "3510"
 - Press the Preset 1 key 4 times.
 - Press the Preset 2 key 6 times.
 - Press the Preset 3 key 2 times.
 - Press the Preset 4 key 1 time.
4. Hold down the DISP key for at least 3 seconds and the message, "RE-ENTER" appears, so once again enter the code according to Step 3 above.
5. Hold down the DISP key for at least 3 seconds, and the message, "APPROVED" appears.
6. Cancel test mode. (See, 2. How to cancel the test mode.)

Note: All clear cannot be performed on the security code for this model.

• Simple way to clear the security code (K type only)

1. During code request mode, press the VOL UP key for at least 3 seconds while holding down the DISP key.
(---- will disappear)
2. Enter, "KCAR" with the remote controller as described below. (Same as on 00 model.)
Press the remote controller 5 key twice, and press the Track Up key. (Enters a "K")
Press the remote controller 2 key three times, and press the Track Up key. (Enters a "C")

Press the remote controller 2 key once, and press the Track Up key. (Enters an "A")

Press the remote controller 7 key twice, and press the Track Up key. (Enters an "R")

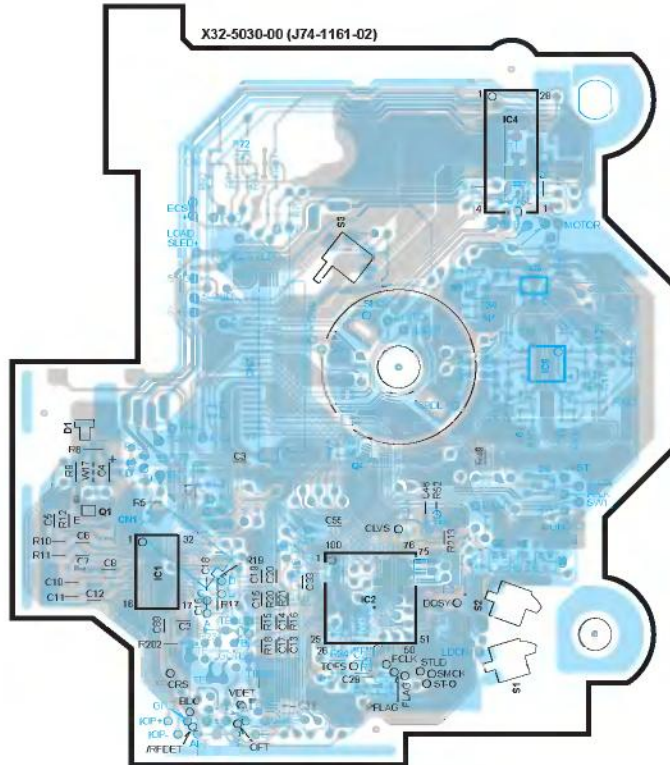
3. Security function is canceled and unit sets to All-Off mode.
4. Code request mode appears if a mistake was made in entering the numbers.

PC BOARD (Component Side View)

CD PLAYER UNIT

CD PLAYER UNIT
(X32-5030-00)

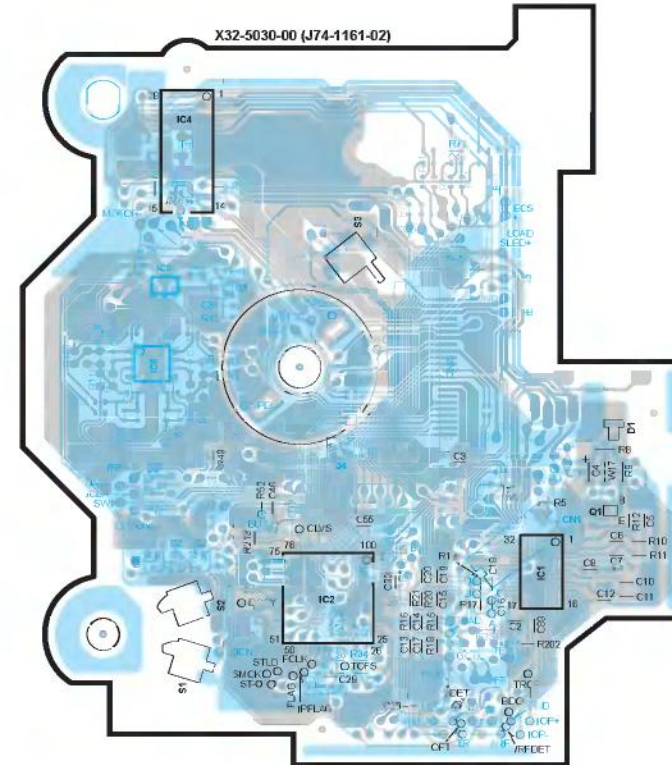
Ref. NO.	IC	Q	Address
1			4B
2			4C
4			2D
5			3D
6			3D
	1		4B
	2		4D
	3		3D
	4		4C
	5		4D



PC BOARD (Foil Side View)

CD PLAYER UNIT

X32-5030-00 (J74-1161-02)



CD PLAYER UNIT
(X32-5030-00)

Ref. NO.	IC	Q	Address
1			4H
2			4G
4			2F
5			3F
6			3F
	1		4H
	2		4F
	3		3F
	4		4G
	5		4F

Refer to the schematic diagram for the values of resistors and capacitors.

PC BOARD (Component Side View)

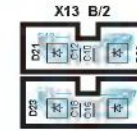
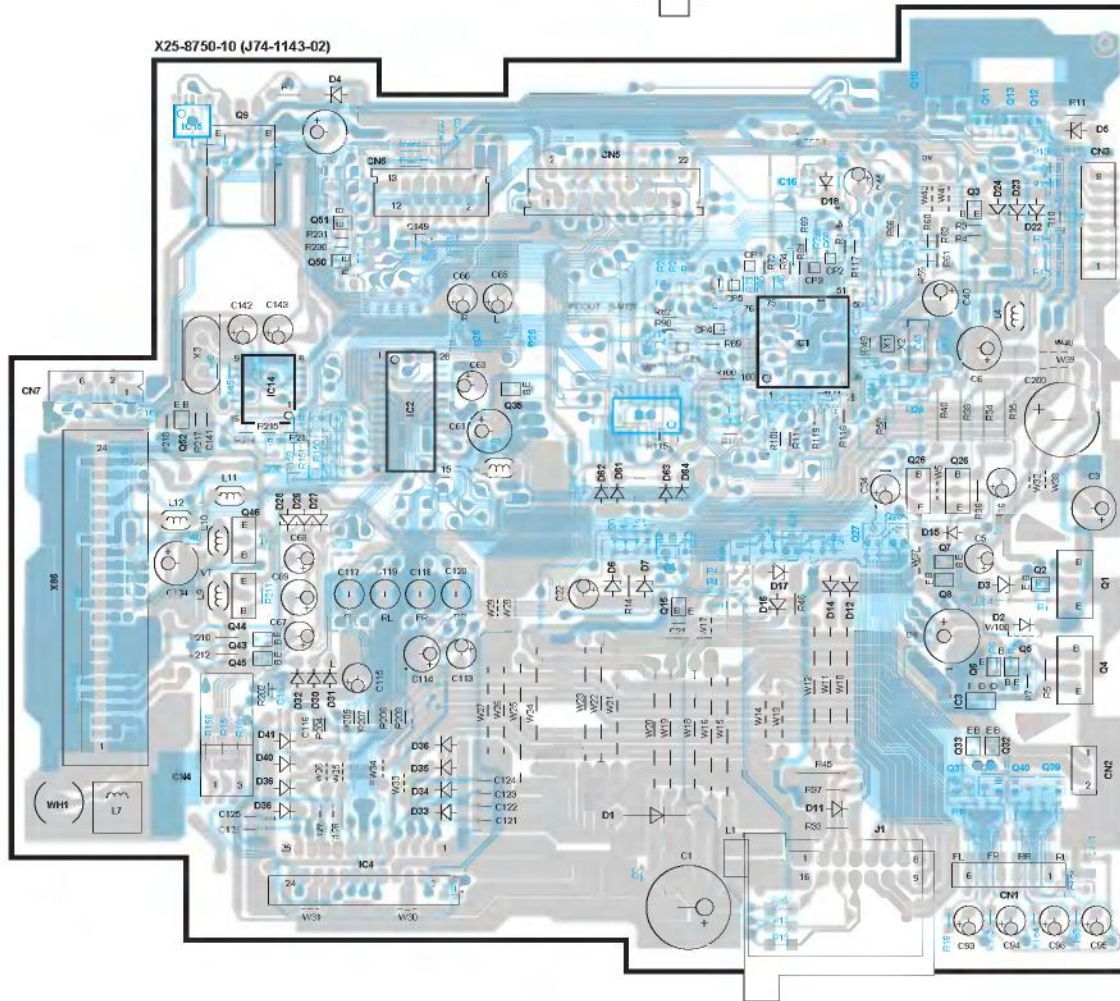
ELECTRIC UNIT

Front

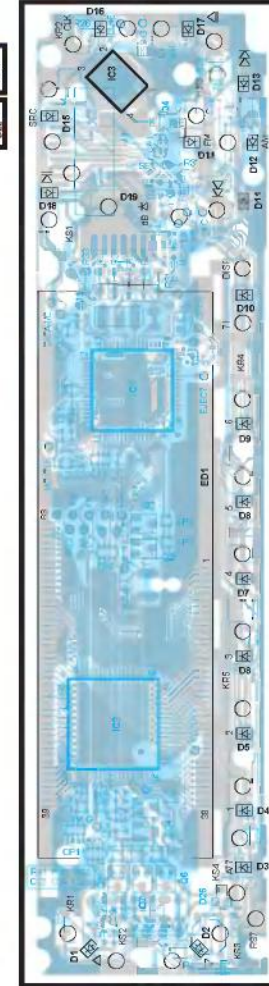
SWITCH UNIT

ELECTRIC UNIT (X25-8750-10)

Ref. NO.	IC	Q	Address
1			3N
2			3L
3			50
4			6L
8			3N
14			3L
15			2K
16			2N
1			4P
2			4O
3			2O
4			5P
5			5O
6			5O
7			4O
8			4O
9			2L
10			2O
11			2O
12			2O
13			2O
14			4N
15			4N
24			3O
25			4O
26			4O
27			4O
28			4O
29			3O
30			4N
31			4N
32			5O
33			5O
35			3M
36			4L
37			5O
38			5O
39			5P
40			5O
43			5L
44			4L
45			5L
46			4L
50			3L
51			2L
52			3K



X13-9950-11 A/2 (J74-1136-12)



SWITCH UNIT (X13-9950-11)

Ref. NO.	IC	Q	Address
1			3O
2			5O
3			2O
1			6O
2			4O
3			4O
4			2R
5			6O
6			6O
7			6O

Refer to the schematic diagram for the values of resistors and capacitors.

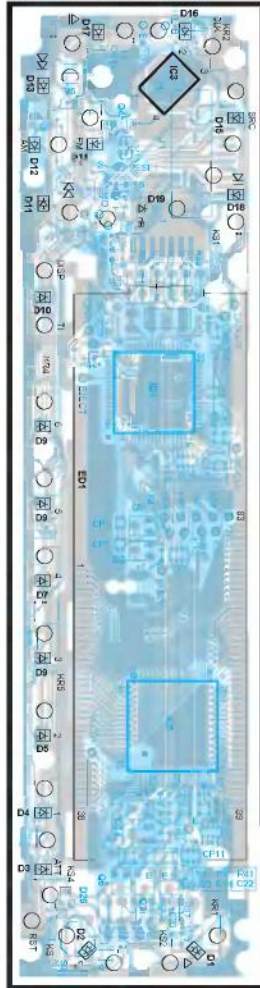
PC BOARD (Foil Side View)

SWITCH UNIT

X13-9950-11 A/2 (J74-1136-12)

SWITCH UNIT
(X13-9950-11)

Ref. NO.	IC	Q	Address
1			3T
2			5T
3			2T
1			5T
2			4T
3			4T
4			2S
5			6T
6			6S
7			6T



X13 B/2

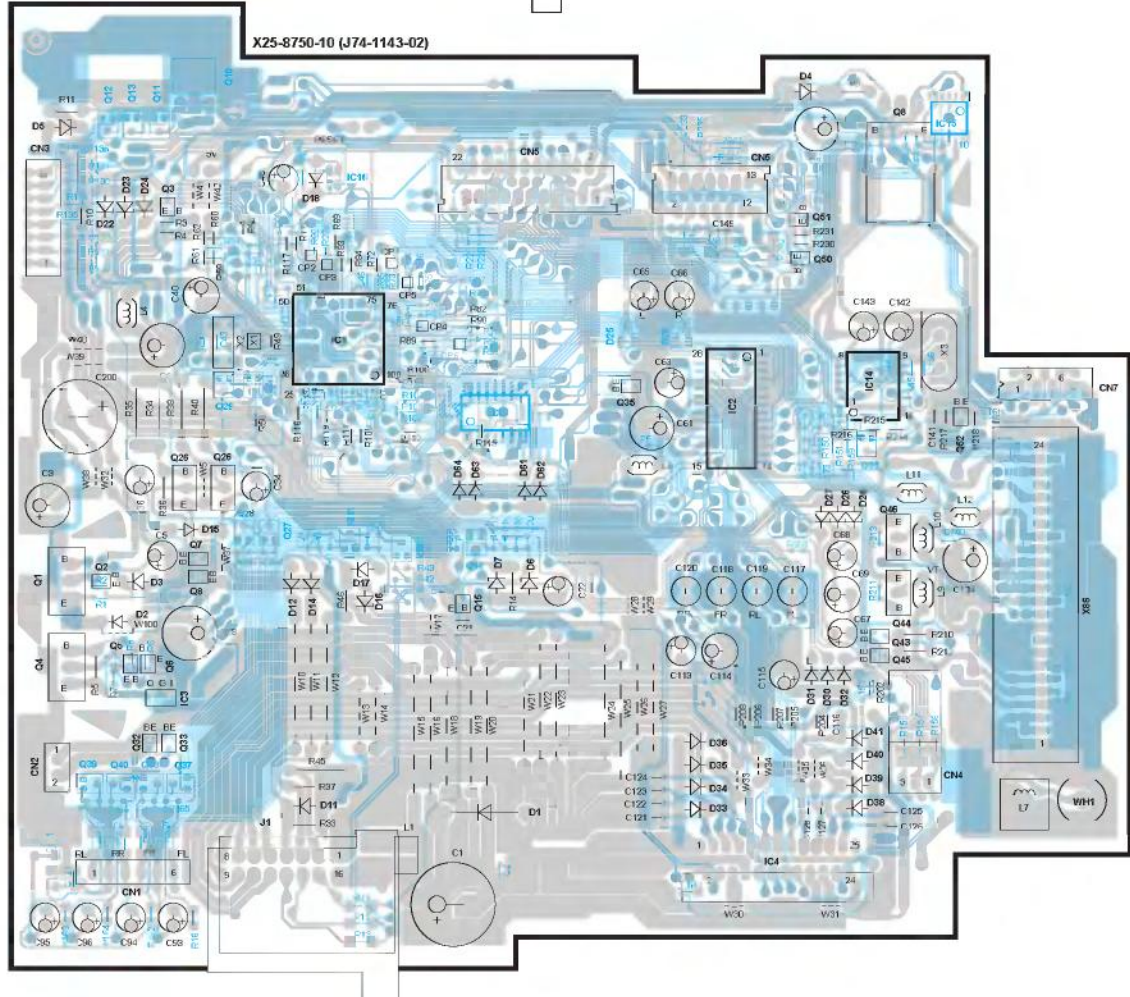


ELECTRIC UNIT

Front



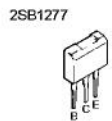
X25-8750-10 (J74-1143-02)



ELECTRIC UNIT
(X25-8750-10)

Ref. NO.	IC	Q	Address
1			3W
2			3Y
3			9V
4			6Y
8			3W
14			3Y
15			2Z
			2W
1			4U
2			4V
3			2V
4			5U
5			5V
6			5V
7			4V
8			4V
9			2Y
10			2V
11			2V
12			2V
13			2V
14			4W
15			4W
24			3V
25			4V
26			4V
27			4V
28			4V
29			3V
30			4W
31			4W
32			5V
33			5V
35			3X
36			4Y
37			5V
38			5V
39			6U
40			6V
43			5Y
44			4Y
45			5Y
46			4Y
50			3Y
51			2Y
52			3Z

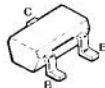
Refer to the schematic diagram for the values of resistors and capacitors.



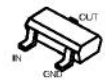
- DTA144EUA
- DTC114YUA
- DTC143TUA
- UN5213
- UN5214
- 2SA1362
- 2SA1576A
- 2SB1216A
- 2SC2412K
- 2SD1819A
- 2SD2114K



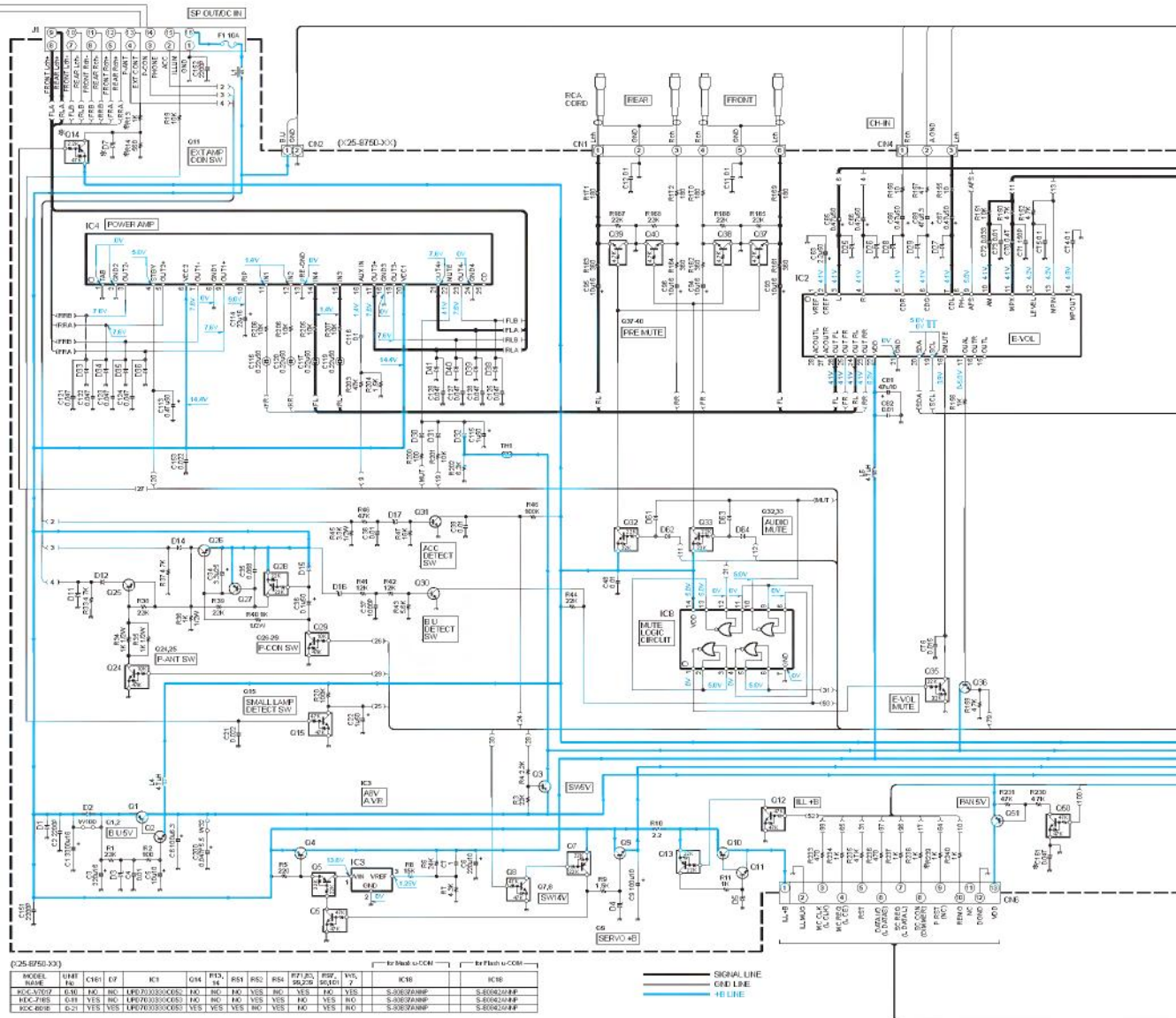
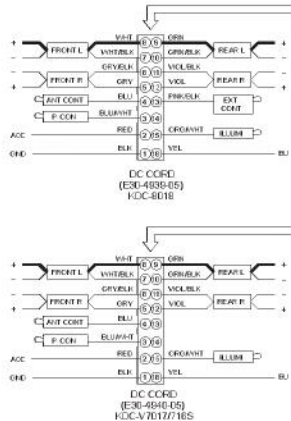
2SC4081



- DTA124EUA
- DTC124EUA
- DTC144EUA



UN5212

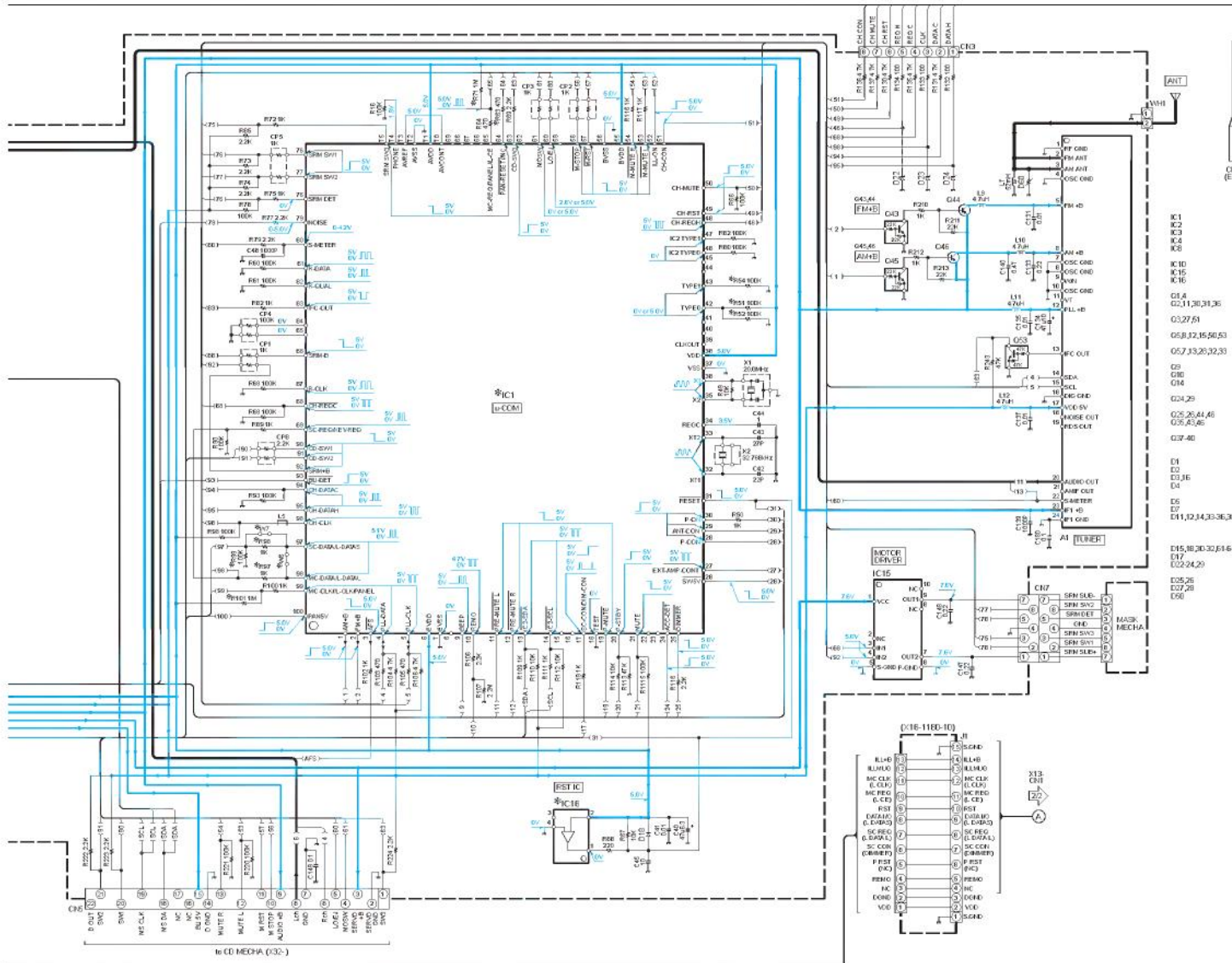


(D25-EF50-333)

MODEL	TAPE	YR	CH1	CF	IC1	Q14	RF1	RS1	RS2	RS3	RF1RS	RS1	RS2	RS3	YR	YR	IC1	IC2
KDC-V577	ELW	INC	INC	INC	LP10703300005	INC	INC	INC	YES	NO	YES	NO	NO	NO	NO	NO	S-8002/244P	S-8002/244P
KDC-F485	ELW	YES	INC	INC	LP10703300005	INC	INC	INC	YES	NO	YES	NO	NO	NO	NO	NO	S-8002/244P	S-8002/244P
KDC-8016	ELW	YES	YES	YES	LP10703300005	YES	YES	YES	NO	NO	NO	NO	NO	NO	NO	NO	S-8002/244P	S-8002/244P

SIGNAL LINE
GND LINE
+B LINE

CAUTION: For continued safety, replace safety critical components only with manufacturer's recommended parts (refer to parts list). Indicates safety critical components. To reduce the risk of electric shock, leakage-current or resistance measurements shall be carried out (exposed parts are acceptably insulated from the supply circuit) before the appliance is returned to the customer.

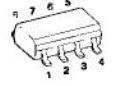


DC voltages are as measured with a high impedance voltmeter. Values may vary slightly due to variations between individual instruments and/or units.

TA78L05F



NJM4565MD



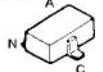
DAN202U



DA204U



RD6.8M



TC74HC02AF



BA5917AFP



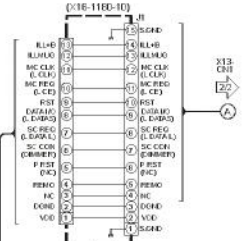
M5237ML



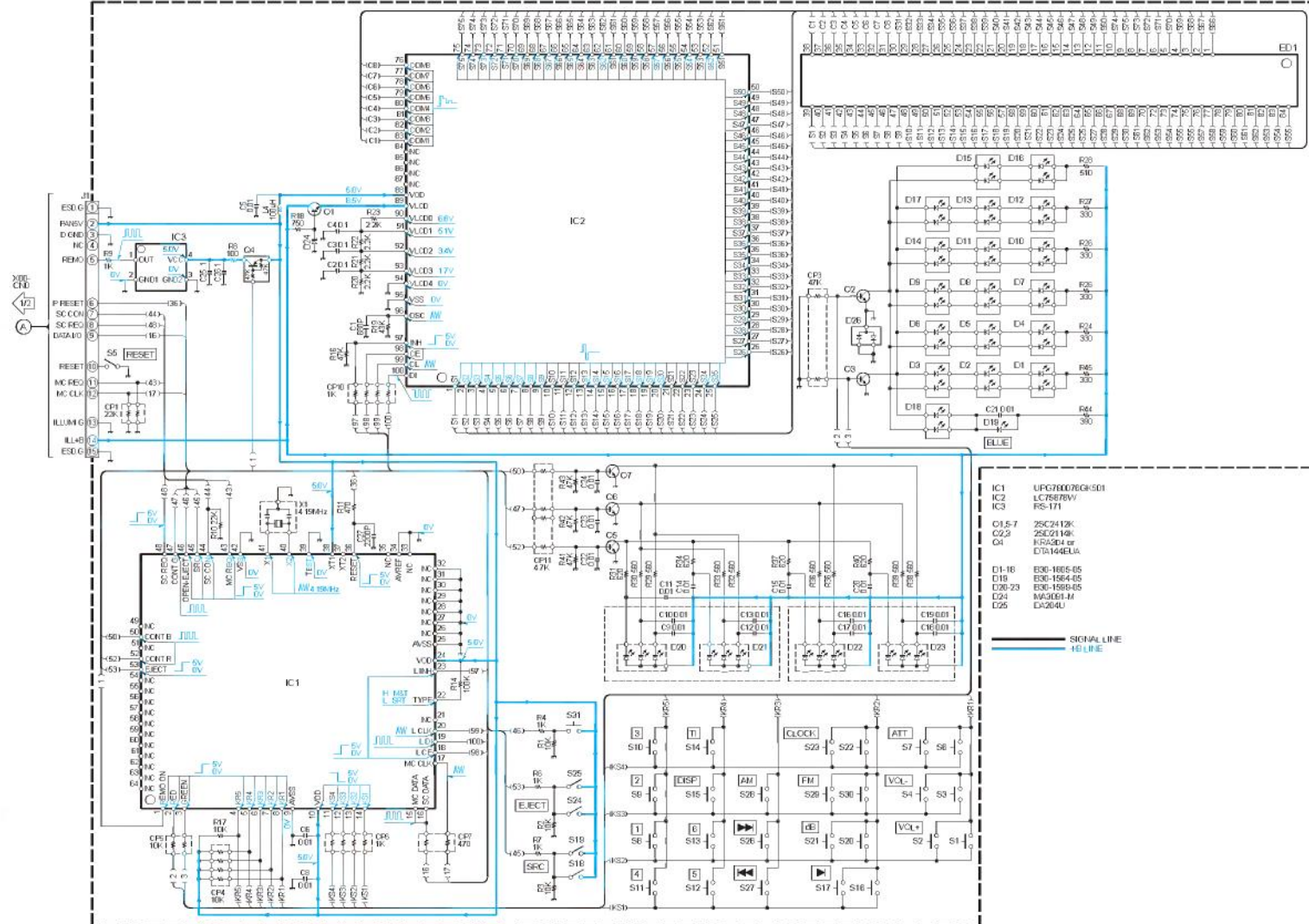
LB1930M



- K1 8
- K2 TEA1747D
- K3 ME237M
- K4 TA535PH
- K5 HE7943CFFP or
- K6 TC74HC02AF
- K7 S-8052AHP
- K8 LB1930M
- K9 9
- K10 25B55EP
- K11 25C4EBT or
- K12 25D185A
- K13 25M575A or
- K14 25E1218A
- K15 8R231 or
- K16 OTC12481A
- K17 9KA303 or
- K18 9DA12481A
- K19 25C0295
- K20 25S184
- K21 9KA9055 or
- K22 9DA1253
- K23 9R2044 or
- K24 DTC12481A
- K25 9R217 or
- K26 9R212 or
- K27 DTC12481A
- K28 9RC480 or
- K29 DTC12481A
- K30 S2V20 mA
- K31 16V83D
- K32 MA4DE504M
- K33 MA4DE504M
- K34 HZ55A
- K35 MA4HEL
- K36 MA4DE504M
- K37 D15,16,20,30,31,64
- K38 D17
- K39 D22,24,29
- K40 D25,26
- K41 D27,28
- K42 D50
- K43 9A432 or
- K44 9SM5E2 or
- K45 9FMS02
- K46 16S12
- K47 MA4DE504M
- K48 MA4DE504M
- K49 HZ55C
- K50 MA4DE504M
- K51 1M44543 or
- K52 SA-C012-101B



(X-13-0050-11)

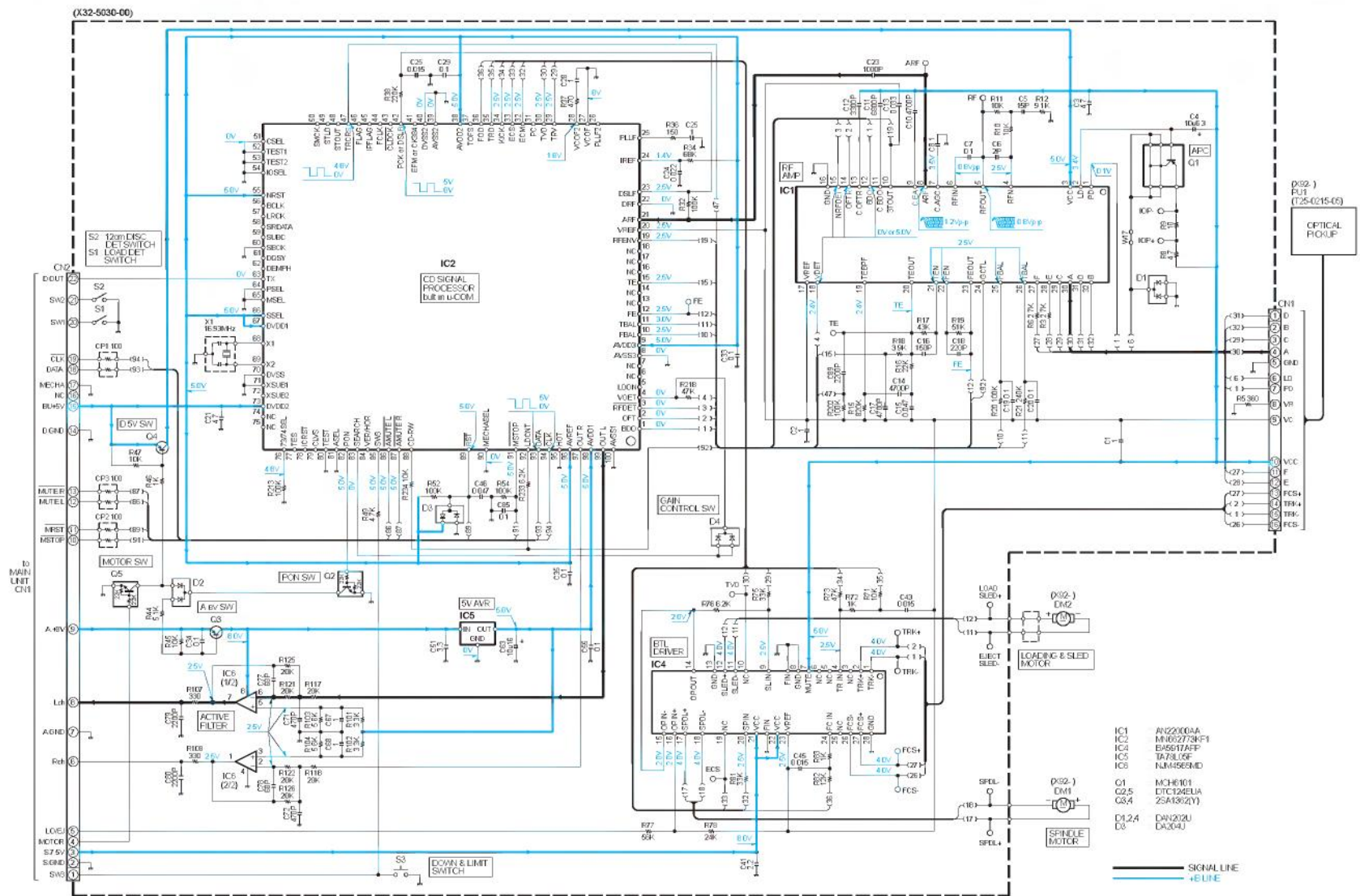


- IC1 UFG7000700K-501
- IC2 LC7587BV
- IC3 RS-171
- C1,5-7 2SC2412K
- C2,8 2SC2114K
- C4 H55504 or DT1444ELA
- D1-16 E36-1565-05
- D18 E36-1564-05
- D26-23 E36-1568-05
- D24 MW2001H
- D25 EA204U

— SIGNAL LINE
— 16V LINE

CAUTION: For continued safety, replace safety critical components only with manufacturer's recommended parts (refer to parts list). ⚡ Indicates safety critical components. To reduce the risk of electric shock, leakage-current or resistance measurements shall be carried out (exposed parts are acceptably insulated from the supply circuit) before the appliance is returned to the customer.

DC voltages are as measured with a high impedance voltmeter. Values may vary slightly due to variations between individual instruments or/and units.



CAUTION: For continued safety, replace safety critical components only with manufacturer's recommended parts (refer to parts list). ⚠ Indicates safety critical components. To reduce the risk of electric shock, leakage-current or resistance measurements shall be carried out (exposed parts are acceptably insulated from the supply circuit) before the appliance is returned to the customer.

DC voltages are as measured with a high impedance voltmeter. Values may vary slightly due to variations between individual instruments of and units.

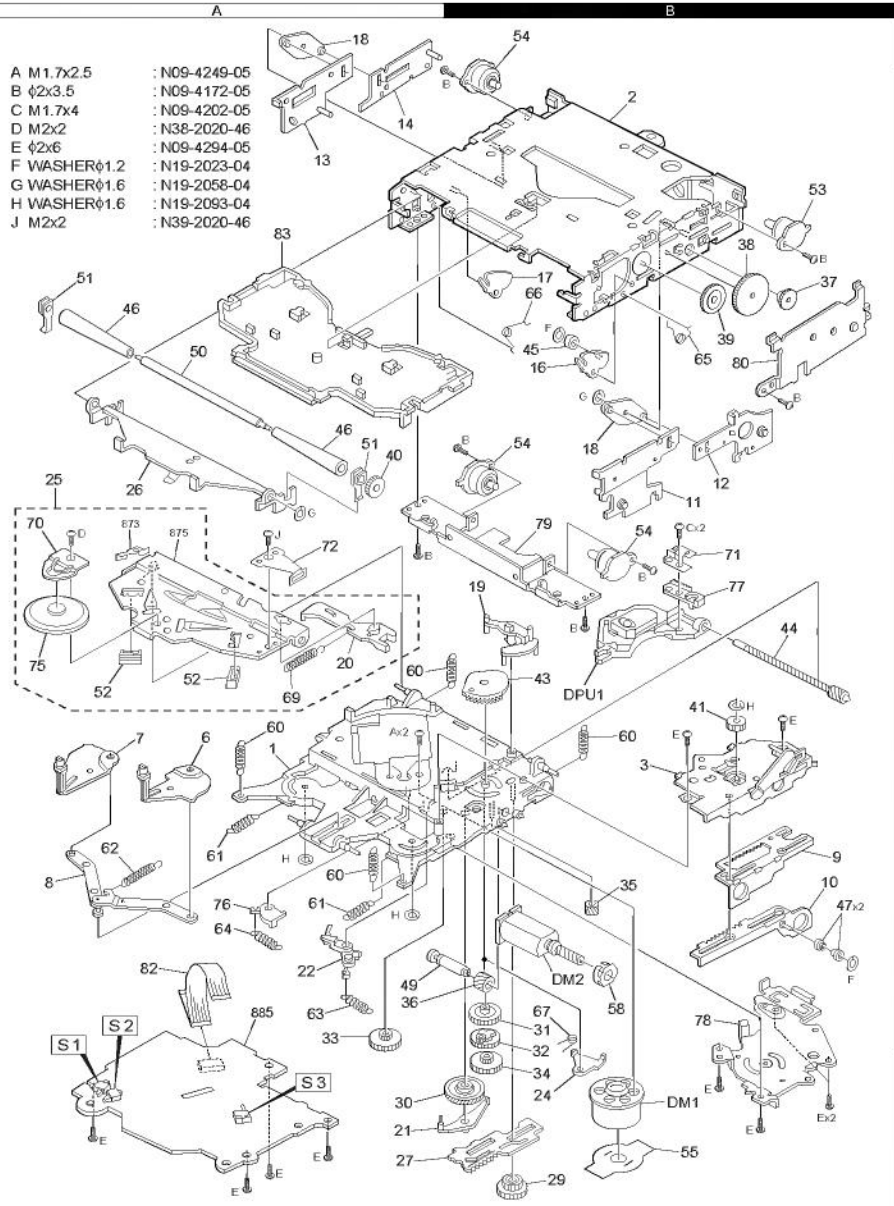
CD MECHANISM

KDC-V7017
KENWOOD

KDC-V7017

EXPLODED VIEW (CD MECHANISM)

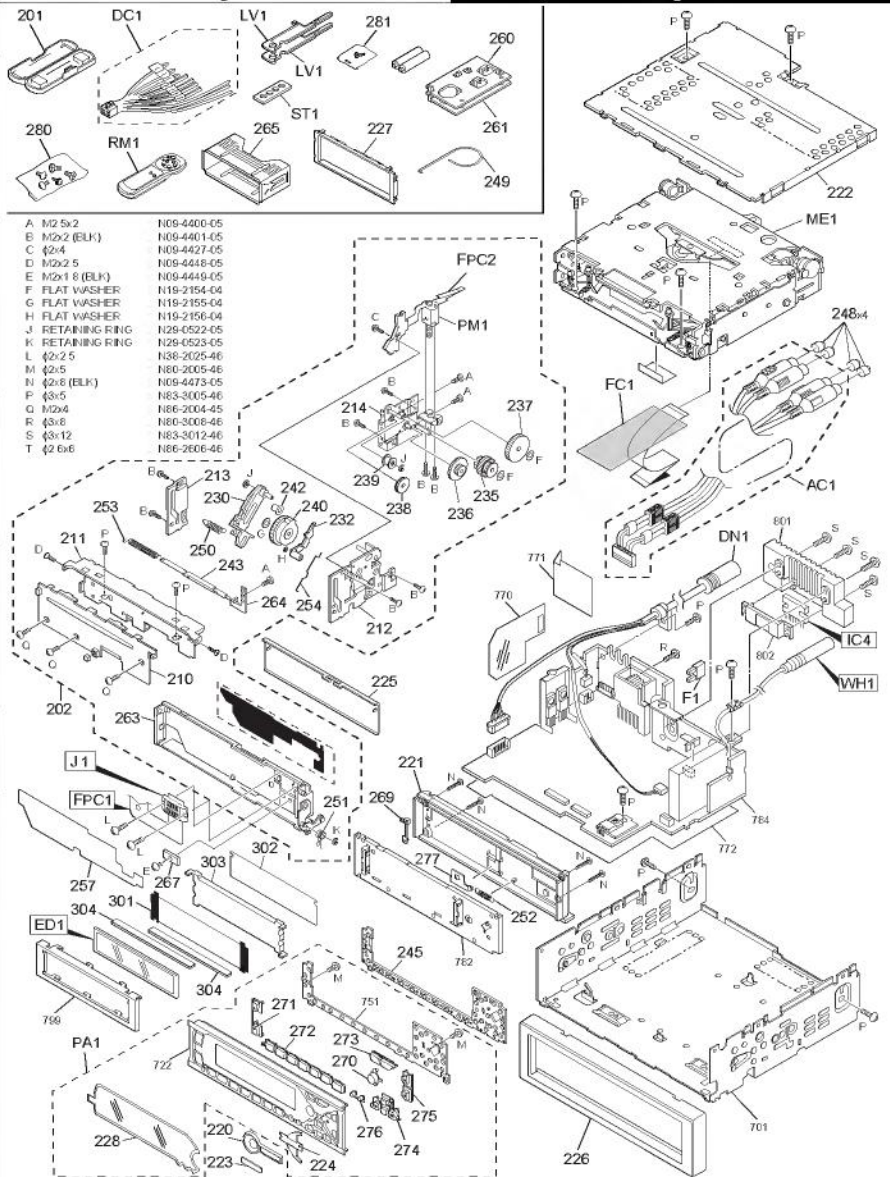
- | | | |
|---|------------|---------------|
| A | M 1.7x2.5 | : N09-4249-05 |
| B | φ2x3.5 | : N09-4172-05 |
| C | M 1.7x4 | : N09-4202-05 |
| D | M 2x2 | : N38-2020-46 |
| E | φ2x6 | : N09-4294-05 |
| F | WASHERφ1.2 | : N19-2023-04 |
| G | WASHERφ1.6 | : N19-2058-04 |
| H | WASHERφ1.6 | : N19-2093-04 |
| J | M 2x2 | : N39-2020-46 |



Parts with exploded numbers larger than 700 are not supplied.

KDC-V7017

EXPLODED VIEW (UNIT)



- | | | |
|---|----------------|---------------|
| A | M 2x2 | : N09-4400-05 |
| B | M 2x2 (BLK) | : N09-4401-05 |
| C | φ2x4 | : N09-4427-05 |
| D | M 2x2.5 | : N09-4448-05 |
| E | M 2x1.8 (BLK) | : N09-4449-05 |
| F | FLAT WASHER | : N19-2154-04 |
| G | FLAT WASHER | : N19-2155-04 |
| H | FLAT WASHER | : N19-2156-04 |
| J | RETAINING RING | : N29-0522-05 |
| K | RETAINING RING | : N29-0523-05 |
| L | φ2x2.5 | : N38-2025-46 |
| M | φ2x5 | : N80-2005-46 |
| N | φ2x8 (BLK) | : N09-4473-05 |
| P | φ3x5 | : N83-3005-46 |
| Q | M 2x4 | : N86-2004-45 |
| R | φ3x8 | : N80-3008-46 |
| S | φ3x12 | : N83-3012-46 |
| T | φ2.6x6 | : N86-2606-46 |

Parts with exploded numbers larger than 700 are not supplied.

PARTS LIST

* New Parts

Parts without Parts No. are not supplied.

Les articles non mentionnés dans le Parts No. ne sont pas fournis.

Teile ohne Parts No. werden nicht geliefert.

KDC-V017

SWITCH UNIT(X13-9950-11)

Ref.No.	A d d	N e w	Parts No.	Description	Des t i n a t i o n
KDC-V7017					
201	1C		A02-1497-03	PLASTIC CABINET ASSY	
202	2C		A10-4803-C2	CHASSIS ASSY	
210	2C		A22-2885-03	SUB PANEL ASSY	
211	2C		A10-4805-C2	CHASSIS	
212	2C		A10-4807-C3	CHASSIS CAULKING ASSY	
213	2C		A10-4812-C3	CHASSIS	
214	2C		A10-4810-C3	CHASSIS CAULKING ASSY	
220	3C		A21-4072-C3	DRESSING PANEL	
221	3C		A46-1691-01	REAR COVER	
222	1D		A52-0779-C2	TOP PLATE	
FA1	3C	*	A64-2153-C2	PANEL ASSY	
FM1	1C		A70-0883-C5	REMOTE CONTROLLER ASSY	
223	3C		B03-3070-04	DRESSING PLATE	
224	3C		B03-3071-03	DRESSING PLATE	
225	2C		B03-3073-02	DRESSING PLATE	
226	3D		B07-3007-03	ESCUTCHEON ASSY	
227	1C		B07-3010-02	ESCUTCHEON	
228	3C		B10-3256-01	FRONT GLASS	
-	-	-	B46-0100-50	WARRANTY CARD	
-	-	-	B46-0606-04	ID CARD	
-	-	-	B64-1853-00	INSTRUCTION MANUAL E	
-	-	-	B64-1894-00	INSTRUCTION MANUAL F,S	
230	2C		D10-4963-04	ARM ASSY	
232	2C		D10-4950-04	ARM	
235	2D		D13-2135-04	GEAR ASSY	
236	2D		D13-2138-04	GEAR	
237	2D		D13-2139-04	GEAR	
238	2C		D13-2140-04	GEAR	
239	2C		D13-2141-04	GEAR ASSY	
240	2C		D13-2155-C3	GEAR ASSY	
242	2C		D14-0754-04	ROLLER	
243	2C		D14-0760-C3	ROLLER	
LV1	1C		D10-4962-04	LEVER	
245	3C		E29-1824-02	CONDUCTIVE RUBBER	
AC1	3C		E30-4535-05	CORD WITH PIN/PLUG	
DC1	1C		E30-4940-05	DC CORD	
DH1	2D		E30-4546-05	CORD WITH DIN CONNECTOR	
DH1	2D		E30-4547-05	CORD WITH DIN CONNECTOR	
FC1	2D		E39-0375-05	FLAT CABLE	
249	1D		F29-0049-05	INSULATING COVER	
F1	2D		F52-0006-05	FUSE(MINI BLADE TYPE)	
F1	2D		F52-0011-05	FUSE(MINI BLADE TYPE)	
249	1D		G01-2924-04	TORSION COIL SPRING	
250	2C		G01-3005-04	EXTENSION SPRING	
251	3C		G01-3006-04	TORSION COIL SPRING	
252	3D		G01-3009-04	EXTENSION SPRING	
253	2C		G01-3060-04	TORSION COIL SPRING	
254	2C		G09-2038-04	FORMED WIRE	
257	3C		G16-1177-04	SHEET	
-	-	-	H10-4764-C2	POLYSTYRENE FOAMED FIXTURE	

Ref.No.	A d d	N e w	Parts No.	Description	Des t i n a t i o n
-	-	-	H25-0329-04	PROTECTION BAG (280X450X0.03)	
-	-	-	H25-0337-04	PROTECTION BAG (180X300X0.03)	
-	-	-	H25-1108-04	PROTECTION BAG (100X300X0.03)	
-	-	-	H30-0544-04	ADHESIVE DOUBLE-COATED TAPE	
-	-	*	H54-2024-C3	ITEM CARTON CASE	
260	1D		J19-5051-03	BRACKET	
261	1D		J19-5052-03	BRACKET	
263	2C		J21-9051-03	MOUNTING HARDWARE ASSY	
264	2C		J21-9059-04	MOUNTING HARDWARE	
265	1C		J21-9716-03	MOUNTING HARDWARE ASSY	
267	3C		J50-0599-04	GUIDE	
FC2	1C		J64-0122-04	FLEXIBLE PRINTED WIRING BOARD	
ST1	1C		J64-0003-04	STAY	
269	3C		K24-3646-04	KNOB OPEN	
270	3C		K24-3647-04	KNOB EQ	
271	3C		K25-1222-03	KNOB VOL	
272	3C		K25-1223-03	KNOB 1-6	
273	3C		K25-1224-03	KNOB SRC	
274	3C		K25-1225-03	KNOB FM/AM	
275	3C		K25-1226-03	KNOB EJECT	
276	3C		K25-1227-03	KNOB DISP	
277	3C		K29-7017-03	KNOB LOCK	
280	1C		N99-1652-05	SCREW SET	
281	1C		N99-1704-05	SCREW SET	
A	2C		N09-4400-05	MACHINE SCREW	
B	2C		N09-4401-05	MACHINE SCREW	
C	1C		N09-4427-05	TAPTITE SCREW	
D	2C		N09-4448-05	MACHINE SCREW	
E	3C		N09-4449-05	MACHINE SCREW	
F	2D		N19-2154-04	FLAT WASHER	
G	2C		N19-2156-04	FLAT WASHER	
H	2C		N19-2156-04	FLAT WASHER	
J	2C		N29-0522-05	RETAINING RING	
K	3C		N29-0523-05	RETAINING RING	
L	3C		N38-2026-46	PAN HEAD MACHIN SCREW	
M	3C		N80-2005-46	PAN HEAD TAPTITE SCREW	
N	3D		N80-2008-45	PAN HEAD TAPTITE SCREW	
P	1D		N63-3005-46	PAN HEAD TAPTITE SCREW	
Q	2C		N66-2004-45	BINDING HEAD TAPTITE SCREW	
FM1	1C		T42-1034-04	MOTOR ASSY	
ME1	1D		X32-4100-00	MECHANISM ASSY	
SWITCH UNIT (X13-9950-11)					
301	3C		B11-1323-04	OPTICAL DIFFUSER	
302	3C		B11-1322-04	REFLECTION SHEET	
303	3C		B19-2069-03	LIGHTING BOARD	
D1-18			E30-1605-05	LED(2COLOR PG/RED)	
D19			E30-1604-05	LED(1608,BLUE)	
D20-23			E30-1599-05	LED(NICHA, FULL)	
E01			E36-1053-05	LIQUID CRYSTAL	
C1			CC736CH1H6E1J	CHIP C 680FF J	
C2-4			CF736E1C104K	CHIP C 0 10UF K	
C2-4			CF736E1H104K	CHIP C 0 10UF K	

△ indicates safety critical components.

PARTS LIST

* New Parts

Parts without Parts No. are not supplied.

Les articles non mentionnés dans le Parts No. ne sont pas fournis.

Teile ohne Parts No. werden nicht geliefert.

SWITCH UNIT(X13-9950-11)

SUB CIRCUIT UNIT(X16-1180-10)

ELECTRIC UNIT(X25-8750-10)

Ref.No.	A d d	N e w	Parts No.	Description	Dest inati on
C5,6			CK73G61H103K	CHIP C 0.010UF K	
C8-24			CK73G61H103K	CHIP C 0.010UF K	
C25,26			CK73G60J105K	CHIP C 1.0UF K	
C27			CK73G61H222K	CHIP C 220PF K	
304	3C		E29-1596-04	CONDUCTIVE RUBBER	
J1			E59-0835-05	RECTANGULAR PLUG	
L4			L40-1015-34	SMALL FIXED INDUCTOR	
X1			L78-0566-05	RESONATOR	
CP1			R90-1020-05	MULTI-COMP 22K X2	
CP3			R90-0723-05	MULTI-COMP 47K X2	
CP4			R90-0714-05	MULTI-COMP 10K X4	
CP5			R90-0726-05	MULTI-COMP 10K X2	
CP6			R90-0724-05	MULTI-COMP 1K X4	
CP7			R90-1022-05	MULTI-COMP 470 X2	
CP10			R90-0724-05	MULTI-COMP 1K X4	
CP11			R90-0718-05	MULTI-COMP 4.7K X4	
R1-3			RK73G61J103J	CHIP F 10K J 1/16W	
R4			RK73G61J102J	CHIP F 1.0K J 1/16W	
R6,7			RK73G61J102J	CHIP F 1.0K J 1/16W	
R8			RK73FE2A101J	CHIP F 100 J 1/10W	
R9			RK73G61J102J	CHIP F 1.0K J 1/16W	
R10			RK73G61J223J	CHIP F 22K J 1/16W	
R11			RK73G61J471J	CHIP F 470 J 1/16W	
R14			RK73G61J104J	CHIP F 100K J 1/16W	
R16			RK73G61J473J	CHIP F 47K J 1/16W	
R17			RK73G61J103J	CHIP F 10K J 1/16W	
R18			RK73G61J751J	CHIP F 750 J 1/16W	
R19			RK73G61J433J	CHIP F 43K J 1/16W	
R20,23			RK73G61J222J	CHIP F 2.2K J 1/16W	
R24-27			RK73EE2E331J	CHIP F 330 J 1/8W	
R28			RK73EE2E511J	CHIP F 510 J 1/8W	
R29,30			RK73EE2E661J	CHIP F 560 J 1/8W	
R31			RK73EE2E21J	CHIP F 620 J 1/8W	
R32,33			RK73EE2E661J	CHIP F 560 J 1/8W	
R34			RK73EE2E21J	CHIP F 620 J 1/8W	
R35,36			RK73EE2E661J	CHIP F 560 J 1/8W	
R37			RK73EE2E21J	CHIP F 620 J 1/8W	
R38,39			RK73EE2E661J	CHIP F 560 J 1/8W	
R40			RK73EE2E21J	CHIP F 620 J 1/8W	
R41-43			RK73G61J473J	CHIP F 47K J 1/16W	
R44			RK73EE2E331J	CHIP F 330 J 1/8W	
R45			RK73EE2E331J	CHIP F 330 J 1/8W	
S31			S70-0864-05	TACT SWITCH	
D24			MA3091-M	ZENER DIODE	
D26			DA204U	DIODE	
IC1			LF72803766K501	ML-COM IC	
IC2			LC75679W	MDS-IC	
IC3			RS-171	ANALOGUE IC	
Q1			Z5C2412K	TRANSISTOR	
Q2,3			Z5E601A	TRANSISTOR	
Q4			Z5D2114K	TRANSISTOR	
Q5			DTA144EUA	DIGITAL TRANSISTOR	
Q6			KRA304	DIGITAL TRANSISTOR	

Ref.No.	A d d	N e w	Parts No.	Description	Dest inati on
Q5-7			Z5C2412K	TRANSISTOR	
Q5-7			Z5D601A	TRANSISTOR	
SUB CIRCUIT UNIT (X16-1180-10)					
J1	3C		E58-0903-05	RECTANGULAR RECEPTACLE	
PC1	3C	*	J41-D21-12	FLEXIBLE PRINTED WIRING BOARD	
ELECTRIC UNIT (X25-8750-10)					
C1			C90-5242-05	ELECTRO 3300UF 16WV	
C2			CK73G61H222K	CHIP C 220UF K	
C3			C90-2866-05	ELECTRO 220UF 16WV	
C4			CK73G61H103K	CHIP C 0.010UF K	
C5			C90-2594-05	ELECTRO 10UF 10WV	
C6			CE04CVL0101M	ELECTRO 100UF 6.3WV	
C7			CK73F61C105K	CHIP C 1.0UF K	
C8			CE04CV1A221M	ELECTRO 220UF 10WV	
C9			CE04CV1A101M	ELECTRO 100UF 10WV	
C11,12			CK73F61H104K	CHIP C 0.10UF K	
C21			CK73G61E223K	CHIP C 0.022UF K	
C21			CK73G61H223K	CHIP C 0.022UF K	
C22			C90-2608-05	ELECTRO 1.0UF 50WV	
C34			C90-2608-05	ELECTRO 3.3UF 25WV	
C35			CK73G61C683K	CHIP C 0.068UF K	
C36			C90-2602-05	ELECTRO 0.10UF 50WV	
C37			CK73G61H102K	CHIP C 1000PF K	
C38,39			CK73G61H103K	CHIP C 0.010UF K	
C40			CE04CVL0470M	ELECTRO 47UF 6.3WV	
C41			CK73G61H103K	CHIP C 0.010UF K	
C42			CC73GCH1H220J	CHIP C 22PF J	
C43			CC73GCH1H270J	CHIP C 27PF J	
C44			CK73G61H105K	CHIP C 1.0UF K	
C45			C90-2608-05	ELECTRO 1.0UF 50WV	
C46			CK73G61H102K	CHIP C 1000PF K	
C48			CK73G61H103K	CHIP C 0.010UF K	
C61			CE04CV1A470M	ELECTRO 47UF 10WV	
C62			CK73G61H103K	CHIP C 0.010UF K	
C63			C90-2610-05	ELECTRO 2.2UF 50WV	
C65-68			C90-2606-05	ELECTRO 0.47UF 50WV	
C69			CE04CVL0470M	ELECTRO 47UF 6.3WV	
C70			CK73G61A474K	CHIP C 0.47UF K	
C71			CK73G61H103K	CHIP C 0.010UF K	
C72			C90-2610-05	ELECTRO 2.2UF 50WV	
C72			CK73G61H333K	CHIP C 0.033UF K	
C72			CK73G61H333K	CHIP C 0.033UF K	
C73			CK73G61H103K	CHIP C 0.010UF K	
C74,75			CK73G61H104K	CHIP C 0.10UF K	
C74,75			CK73G61H104K	CHIP C 0.10UF K	
C98-96			C90-2597-05	ELECTRO 10UF 16WV	
C113			C90-2606-05	ELECTRO 0.47UF 50WV	
C114			CE04CV1C220M	ELECTRO 22UF 16WV	
C115			C90-2608-05	ELECTRO 1.0UF 50WV	
C116			CK73G61C104K	CHIP C 0.10UF K	
C116			CK73G61H104K	CHIP C 0.10UF K	
C117-120			C90-5296-05	NP-ELECT 0.22UF 50WV	
C121-128			CK73G61E473K	CHIP C 0.047UF K	
C121-128			CK73G61H473K	CHIP C 0.047UF K	

▲ indicates safety critical components.

PARTS LIST

* New Parts

Parts without Parts No. are not supplied.

Les articles non mentionnés dans le Parts No. ne sont pas fournis.

Teile ohne Parts No. werden nicht geliefert.

ELECTRIC UNIT(X25-8750-10)

Ref.No.	A d d w	N e w	Parts No.	Description	Des t i n a t i o n	Ref.No.	A d d w	N e w	Parts No.	Description	Des t i n a t i o n
C131			CK73GB1H103K	CHIP C 0 010UF K		R41,42			FK73GB1J123J	CHIP F 12K J 1/16W	
C133			CK73GB1A224K	CHIP C 0 22UF K		R43			FK73GB1J562J	CHIP F 5.6K J 1/16W	
C147,148			CE04CW1A470M	ELECTRO 47UF 10WV		R44			FK73GB1J223J	CHIP F 22K J 1/16W	
C135			CK73GB1H103K	CHIP C 0 010UF K		R45			FD14DE2H332J	SMALL-FD 3.3K J 1/2W	
C137			CK73GB1H103K	CHIP C 0 010UF K		R47			FK73GB1J183J	CHIP F 18K J 1/16W	
C139			CK73GB1H102K	CHIP C 1000PF K		R48			FK73GB1J104J	CHIP F 100K J 1/16W	
C140			CK73GB1A474K	CHIP C 0 47UF K		R49			FK73GB1J103J	CHIP F 10K J 1/16W	
C147,148			CK73GB1A224K	CHIP C 0 22UF K		F50			FK73GB1J102J	CHIP F 1.0K J 1/16W	
C149			CK73GB1C104K	CHIP C 0 10UF K		F52			FK73GB1J104J	CHIP F 100K J 1/16W	
C149			CK73GB1H104K	CHIP C 0 10UF K		F60			FK73GB1J104J	CHIP F 100K J 1/16W	
C150			CK73GB1H222K	CHIP C 2200PF K		F62			FK73GB1J104J	CHIP F 100K J 1/16W	
C160			CK73GB1E473K	CHIP C 0 047UF K		F66,67			FK73GB1J104J	CHIP F 100K J 1/16W	
C160			CK73GB1H473K	CHIP C 0 047UF K		F69			FK73GB1J223J	CHIP F 2.2K J 1/16W	
CN1			E40-3241-05	PIN ASSY		F71			FK73GB1J105J	CHIP F 1.0M J 1/16W	
CN2			E40-3237-05	PIN ASSY		F72			FK73GB1J102J	CHIP F 1.0K J 1/16W	
CN3			E40-3252-05	PIN ASSY		F73,74			FK73GB1J223J	CHIP F 2.2K J 1/16W	
CN4			E40-3261-05	PIN ASSY		F75			FK73GB1J102J	CHIP F 1.0K J 1/16W	
CN5			E40-9580-05	FLAT CABLE CONNECTOR		F76			FK73GB1J104J	CHIP F 100K J 1/16W	
CN6			E40-9557-05	FLAT CABLE CONNECTOR		F77			FK73GB1J223J	CHIP F 2.2K J 1/16W	
CN7			E40-5031-05	FLAT CABLE CONNECTOR		F79			FK73GB1J223J	CHIP F 2.2K J 1/16W	
J1			E58-0863-15	RECTANGULAR RECEPTACLE		F80,81			FK73GB1J104J	CHIP F 100K J 1/16W	
WH1			E30-4804-05	COFD WITH FLUG		F82			FK73GB1J102J	CHIP F 1.0K J 1/16W	
WH1			E30-4932-05	COFD WITH FLUG		F83,84			FK73GB1J471J	CHIP F 470 J 1/16W	
L1			L53-1170-05	CHOKE COIL ASSY		F85			FK73GB1J223J	CHIP F 2.2K J 1/16W	
L4			L40-4795-91	SMALL FIXED INDUCTOR(R4 7UH, J)		F86			FK73GB1J104J	CHIP F 100K J 1/16W	
L5			L52-0075-05	CHIP FERRITE		F88			FK73GB1J104J	CHIP F 100K J 1/16W	
L6			L40-4795-91	SMALL FIXED INDUCTOR(R4 7UH, J)		F89			FK73GB1J102J	CHIP F 1.0K J 1/16W	
L7			L53-1039-05	LINE FILTER COIL		F90			FK73GB1J104J	CHIP F 100K J 1/16W	
L9-12			L40-4795-91	SMALL FIXED INDUCTOR(R4 7UH, J)		F93			FK73GB1J104J	CHIP F 100K J 1/16W	
X1			L78-0521-05	RESONATOR		F96			FK73GB1J104J	CHIP F 100K J 1/16W	
X2			L77-2736-05	CRYSTAL RESONATOR		F99			FK73GB1J104J	CHIP F 100K J 1/16W	
P	20		N83-3005-46	PAN HEAD TAPTITE SCREW		F100			FK73GB1J102J	CHIP F 1.0K J 1/16W	
R	20		N80-3008-46	PAN HEAD TAPTITE SCREW		F102			FK73GB1J102J	CHIP F 1.0K J 1/16W	
S	20		N83-3012-46	PAN HEAD TAPTITE SCREW		F103			FK73GB1J471J	CHIP F 470 J 1/16W	
T	20		N86-2806-46	BINDING HEAD TAPTITE SCREW		F104			FK73GB1J472J	CHIP F 4.7K J 1/16W	
CP1-3			F90-0725-05	MULTI-COMP 1K X2		F105			FK73GB1J471J	CHIP F 470 J 1/16W	
CP4			F90-0737-05	MULTI-COMP 100K X2		F106			FK73GB1J472J	CHIP F 4.7K J 1/16W	
CP5			F90-0725-05	MULTI-COMP 1K X2		F107			FK73GB1J225J	CHIP F 2.2M J 1/16W	
CP6			F90-1013-05	MULTI-COMP 2.2K X2		F108			FK73GB1J223J	CHIP F 2.2K J 1/16W	
F1			FK73GB1J223J	CHIP F 22K J 1/16W		F109			FK73GB1J102J	CHIP F 1.0K J 1/16W	
F2			FK73GB1J101J	CHIP F 100 J 1/16W		F110			FK73GB1J103J	CHIP F 10K J 1/16W	
F3			FK73GB1J223J	CHIP F 22K J 1/16W		F111			FK73GB1J102J	CHIP F 1.0K J 1/16W	
F4			FK73GB1J223J	CHIP F 2.2K J 1/16W		F112			FK73GB1J103J	CHIP F 10K J 1/16W	
F6			FK73GB1J183J	CHIP F 18K J 1/16W		F113			FK73GB1J473J	CHIP F 47K J 1/16W	
F7			F52-3832-05	CHIP F 4.3K D 1/10W		F114			FK73GB1J103J	CHIP F 10K J 1/16W	
F8			F52-3047-05	CHIP F 24K D 1/10W		F115			FK73GB1J104J	CHIP F 100K J 1/16W	
F10			FK73EE2E2E2J	CHIP F 2.2 J 1/8W		F116			FK73GB1J223J	CHIP F 2.2K J 1/16W	
F16			FK73GB1J104J	CHIP F 100K J 1/16W		F117, 119			FK73GB1J102J	CHIP F 1.0K J 1/16W	
F19			FK73EE2E10CJ	CHIP F 10K J 1/8W		F130,131			FK73EE2E472J	CHIP F 4.7K J 1/8W	
F20			FK73GB1J104J	CHIP F 100K J 1/16W		F132-134			FK73EE2E10CJ	CHIP F 100 J 1/8W	
F34,35			FD14DE2H102J	SMALL-FD 1.0K J 1/2W		F135-137			FK73EE2E472J	CHIP F 4.7K J 1/8W	
F36			FD14DE2H102J	SMALL-FD 1.0K J 1/2W		F150			FK73GB1J472J	CHIP F 4.7K J 1/16W	
F39			FK73GB1J223J	CHIP F 22K J 1/16W		F151			FK73GB1J103J	CHIP F 10K J 1/16W	
F40			FD14DE2H102J	SMALL-FD 1.0K J 1/2W		F152			FK73GB1J472J	CHIP F 4.7K J 1/16W	
						F153,156			FK73EE2E10CJ	CHIP F 10 J 1/8W	

A indicates safety critical components.

PARTS LIST

* New Parts

Parts without Parts No. are not supplied.

Les articles non mentionnés dans le Parts No. ne sont pas fournis.

Teile ohne Parts No. werden nicht geliefert.

ELECTRIC UNIT(X25-8750-10)

Ref.No.	A d d	N e w	Parts No.	Description	Dest inati on
F157			RK73EB2B4F7J	CHIP R 4.7 J 1/8W	
F158			RK73GB1J1G2J	CHIP R 10K J 1/16W	
F159			RK73GB1J472J	CHIP R 4.7K J 1/16W	
F161-164			RK73FB2A361J	CHIP R 360 J 1/10W	
F165-168			RK73GB1J223J	CHIP R 22K J 1/16W	
F169-172			RK73EB2B181J	CHIP R 180 J 1/8W	
F200			RK73GB1J1G1J	CHIP R 10K J 1/16W	
F201			RK73GB1J1G3J	CHIP R 10K J 1/16W	
F202			RK73GB1JG23J	CHIP R 6.2K J 1/16W	
F203			RK73GB1J473J	CHIP R 47K J 1/16W	
F204			RK73GB1J152J	CHIP R 1.5K J 1/16W	
F205-208			RK73GB1J1G3J	CHIP R 10K J 1/16W	
F211			RK73GB1J223J	CHIP R 22K J 1/16W	
F213			RK73GB1J223J	CHIP R 22K J 1/16W	
F220,221			RK73GB1J104J	CHIP R 100K J 1/16W	
F222-224			RK73GB1J223J	CHIP R 22K J 1/16W	
F230			RK73GB1J472J	CHIP R 4.7K J 1/16W	
F231			RK73GB1J473J	CHIP R 47K J 1/16W	
F233			RK73EB2B471J	CHIP R 470 J 1/8W	
F234			RK73EB2B1G2J	CHIP R 1.0K J 1/8W	
F235			RK73EB2B472J	CHIP R 4.7K J 1/8W	
F236			RK73EB2B471J	CHIP R 470 J 1/8W	
F237-240			RK73EB2B1G2J	CHIP R 1.0K J 1/8W	
W6,7			RS2-1252-05	CHIP R 0.0HM	
D1			SZV20*A	DIODE	
D2			16W443	DIODE	
D3			MA4066(N)-M	ZENER DIODE	
D4			HZS9A2L	ZENER DIODE	
D4			MA4062(N)-L	ZENER DIODE	
D5			MA4110-L	ZENER DIODE	
D11,12			AM10Z	DIODE	
D11,12			DSM1SD2	DIODE	
D11,12			EPA15-C2	DIODE	
D14			AM10Z	DIODE	
D14			DSM1SD2	DIODE	
D14			EPA15-C2	DIODE	
D15			1SS133	DIODE	
D16			MA4066(N)-M	ZENER DIODE	
D17			MA4062(N)-M	ZENER DIODE	
D18			1SS133	DIODE	
D22-24			HZSEC1	ZENER DIODE	
D22-24			MA4062-L	ZENER DIODE	
D25,26			PD6 8M1E2	ZENER DIODE	
D27,28			MA4066(N)-M	ZENER DIODE	
D29			HZSEC1	ZENER DIODE	
D29			MA4062-L	ZENER DIODE	
D30-32			1SS133	DIODE	
D33-36			AM10Z	DIODE	
D33-36			DSM1SD2	DIODE	
D33-36			EPA15-C2	DIODE	
D38-41			AM10Z	DIODE	
D38-41			DSM1SD2	DIODE	
D38-41			EPA15-C2	DIODE	
D61-64			1SS133	DIODE	

Ref.No.	A d d	N e w	Parts No.	Description	Dest inati on
IC1			UF070303G0052	M-COM IC	
IC2			TD17407D	ANALOGUE IC	
IC3			M5237ML	(VOLTAGE REGULATOR)	
IC4			TA8263BH	ANALOGUE IC	
IC6			HD74HC02FP	MOS-IC	
IC6			TC74HC02AF	IC	
IC15			LB1530M	ANALOGUE IC	
IC16			S-80837AN1P	MOS-IC	
O1			Z5B154B(F)	TRANSISTOR	
O2			Z5C4081	TRANSISTOR	
O2			Z5D1819A	TRANSISTOR	
O3			Z5A1576A	TRANSISTOR	
O3			Z5B1216A	TRANSISTOR	
O4			Z5B154B(F)	TRANSISTOR	
O5			DT1448UA	DIGITAL TRANSISTOR	
O5			UN5213	DIGITAL TRANSISTOR	
O6,7			DTA1248UA	DIGITAL TRANSISTOR	
O6,7			KFA303	DIGITAL TRANSISTOR	
O8			DT1448UA	DIGITAL TRANSISTOR	
O8			UN5213	DIGITAL TRANSISTOR	
O9			Z5C2375	TRANSISTOR	
O10			Z5B1184	TRANSISTOR	
O11			Z5C4081	TRANSISTOR	
O11			Z5D1819A	TRANSISTOR	
O12			DT1448UA	DIGITAL TRANSISTOR	
O12			UN5213	DIGITAL TRANSISTOR	
O13			DTA1248UA	DIGITAL TRANSISTOR	
O13			KFA303	DIGITAL TRANSISTOR	
O15			DT1448UA	DIGITAL TRANSISTOR	
O15			UN5213	DIGITAL TRANSISTOR	
O24			DT144YUA	DIGITAL TRANSISTOR	
O24			UN5214	DIGITAL TRANSISTOR	
O25,26			Z5B1277(O,F)	TRANSISTOR	
O27			Z5A1576A	TRANSISTOR	
O27			Z5B1216A	TRANSISTOR	
O28			DTA1248UA	DIGITAL TRANSISTOR	
O28			KFA303	DIGITAL TRANSISTOR	
O29			DT144YUA	DIGITAL TRANSISTOR	
O29			UN5214	DIGITAL TRANSISTOR	
O30,31			Z5C4081	TRANSISTOR	
O30,31			Z5D1819A	TRANSISTOR	
O32,33			DTA1248UA	DIGITAL TRANSISTOR	
O32,33			KFA303	DIGITAL TRANSISTOR	
O35			DT1248UA	DIGITAL TRANSISTOR	
O36			UN5212	DIGITAL TRANSISTOR	
O36			Z5C4081	TRANSISTOR	
O36			Z5D1819A	TRANSISTOR	
O37-40			DT1433TUA	DIGITAL TRANSISTOR	
O37-40			KFA410	DIGITAL TRANSISTOR	
O43			DT1248UA	DIGITAL TRANSISTOR	
O43			UN5212	DIGITAL TRANSISTOR	
O44			Z5B1277(O,F)	TRANSISTOR	
O45			DT1248UA	DIGITAL TRANSISTOR	
O45			UN5212	DIGITAL TRANSISTOR	
O46			Z5B1277(O,F)	TRANSISTOR	

⚠ indicates safety critical components.

PARTS LIST

* New Parts

Parts without Parts No. are not supplied.

Les articles non mentionnés dans le Parts No. ne sont pas fournis.

Teile ohne Parts No. werden nicht geliefert.

ELECTRIC UNIT(X25-8750-10)

CD PLAYER UNIT(X32-5030-00)

Ref.No.	A d d	N e w	Parts No.	Description	Dest inati on
050			DTC144EUA	DIGITAL TRANSISTOR	
050			LN85213	DIGITAL TRANSISTOR	
051			2SA1576A	TRANSISTOR	
051			2SB1216A	TRANSISTOR	
TH1			PTH5C42ED4710	POSITIVE RESISTOR	
E/E			X06-3240-11	TUNER UNIT	
CD PLAYER UNIT (X32-5030-00)					
C1,2					
C3			CK73FB1C105K	CHIP C 1.0UF K	
C4			CK73FBCJ475K	CHIP C 4.7UF K	
C5			CS2-0566-05	CHIP-TAN 10UF 6.3WV	
C6			CC73GCH1H15J	CHIP C 15PF J	
			CC73GCH1H20C	CHIP C 2.0FF K	
C7			CK73GB1C104K	CHIP C 0.10UF K	
C8			CK73FB1C105K	CHIP C 1.0UF K	
C10			CK73GB1H472K	CHIP C 4700PF K	
C11			CK73GB1H682K	CHIP C 6800PF K	
C12			CK73GB1H332K	CHIP C 3300PF K	
C13			CK73GB1C333K	CHIP C 0.033UF K	
C14			CK73GB1H472K	CHIP C 4700PF K	
C15			CK73GB1C473K	CHIP C 0.047UF K	
C16			CC73GCH1H15J	CHIP C 150PF J	
C17			CK73GB1H472K	CHIP C 4700PF K	
C18			CC73GCH1H22J	CHIP C 220PF J	
C19,20			CK73GB1C104K	CHIP C 0.10UF K	
C21			CK73FBCJ475K	CHIP C 4.7UF K	
C23			CK73GB1H102K	CHIP C 1000PF K	
C24			CK73GB1E223K	CHIP C 0.022UF K	
C25			CK73GB1H153K	CHIP C 0.015UF K	
C26			CK73GBJ105K	CHIP C 1.0UF K	
C28			CK73GBJ105K	CHIP C 1.0UF K	
C29			CK73GB1C104K	CHIP C 0.10UF K	
C33-35			CK73GB1C104K	CHIP C 0.10UF K	
C41			CK73EB1C225K	CHIP C 2.2UF K	
C43			CK73GB1H153K	CHIP C 0.015UF K	
C45			CK73GB1H153K	CHIP C 0.015UF K	
C46			CK73GB1C473K	CHIP C 0.047UF K	
C51			CK73FB1C105K	CHIP C 1.0UF K	
C55			CK73GB1C104K	CHIP C 0.10UF K	
C63			CS2-1369-05	CHIP-TAN 10UF 16WV	
C67,68			CK73GBJ105K	CHIP C 1.0UF K	
C71,72			CK73GB1H471K	CHIP C 470PF K	
C77,78			CC73GCH1H68J	CHIP C 68PF J	
C79,80			CK73GB1H222K	CHIP C 2200PF K	
C85			CK73GB1C104K	CHIP C 0.10UF K	
C89			CK73GB1H222K	CHIP C 2200PF K	
C91			E40-9536-05	FLAT CABLE CONNECTOR	
C92			E40-9339-05	FLAT CABLE CONNECTOR	
C92			E41-0036-05	FLAT CABLE CONNECTOR	
C92			E41-0129-05	FLAT CABLE CONNECTOR	
X1			L78-0572-05	RESONATOR (16.93MHZ)	
CF1-3			R50-1019-05	MULTI-COMP 100 X2	
F3			FK73GB1J272J	CHIP F 2.7K J 1/16W	
F5			FK73GB1J561J	CHIP F 360 J 1/16W	

Ref.No.	A d d	N e w	Parts No.	Description	Dest inati on
F6			FK73GB1J272J	CHIP F 2.7K J 1/16W	
F8			FK73EE2E4R7J	CHIP F 4.7 J 1/8W	
F9			FK73EE2E10CJ	CHIP F 10 J 1/8W	
F10,11			FK73GB1J103J	CHIP F 10K J 1/16W	
F12			FK73GB1J513J	CHIP F 51K J 1/16W	
F15			FK73GB1J824J	CHIP F 820K J 1/16W	
F16			FK73GB1J223J	CHIP F 22K J 1/16W	
F17			FK73GB1J513J	CHIP F 51K J 1/16W	
F18			FK73GB1J352J	CHIP F 3.5K J 1/16W	
F19			FK73GB1J513J	CHIP F 51K J 1/16W	
F20			FK73GB1J104J	CHIP F 100K J 1/16W	
F21			FK73GB1J304J	CHIP F 300K J 1/16W	
F32			FK73GB1J104J	CHIP F 100K J 1/16W	
F34			FK73GB1J683J	CHIP F 68K J 1/16W	
F36			FK73GB1J151J	CHIP F 150 J 1/16W	
F37			FK73GB1J471J	CHIP F 470 J 1/16W	
F38			FK73GB1J224J	CHIP F 22K J 1/16W	
F44			FK73GB1J513J	CHIP F 5.1K J 1/16W	
F45			FK73GB1J103J	CHIP F 10K J 1/16W	
F46			FK73GB1J102J	CHIP F 1.0K J 1/16W	
F47			FK73GB1J103J	CHIP F 10K J 1/16W	
F49			FK73GB1J472J	CHIP F 4.7K J 1/16W	
F52			FK73GB1J104J	CHIP F 100K J 1/16W	
F54			FK73GB1J104J	CHIP F 100K J 1/16W	
F71			FK73GB1J103J	CHIP F 10K J 1/16W	
F72			FK73GB1J102J	CHIP F 1.0K J 1/16W	
F73			FK73GB1J473J	CHIP F 47K J 1/16W	
F75			FK73GB1J333J	CHIP F 33K J 1/16W	
F76			FK73GB1J622J	CHIP F 6.2K J 1/16W	
F77			FK73GB1J563J	CHIP F 56K J 1/16W	
F78			FK73GB1J243J	CHIP F 24K J 1/16W	
F81			FK73GB1J333J	CHIP F 33K J 1/16W	
F82			FK73GB1J123J	CHIP F 12K J 1/16W	
F83			FK73GB1J102J	CHIP F 1.0K J 1/16W	
F101,102			FK73GB1J332J	CHIP F 3.3K J 1/16W	
F103,104			FK73GB1J562J	CHIP F 5.6K J 1/16W	
F107,108			FK73FE2A331J	CHIP F 330 J 1/10W	
F117,118			FK73FE2A203J	CHIP F 20K J 1/10W	
F121,122			FK73FE2A203J	CHIP F 20K J 1/10W	
F125,126			FK73FE2A203J	CHIP F 20K J 1/10W	
F202			FK73GB1J104J	CHIP F 100K J 1/16W	
F213			FK73GB1J104J	CHIP F 100K J 1/16W	
F216			FK73GB1J473J	CHIP F 47K J 1/16W	
F233			FK73GB1J622J	CHIP F 6.2K J 1/16W	
F234			FK73GB1J103J	CHIP F 10K J 1/16W	
W17			R52-2053-05	CHIP F 0 J 1/8W	
S1,2			S88-0838-05	PUSH SWITCH	
S3			S88-0859-05	PUSH SWITCH	
D1,2			DA1Z02U	DIODE	
D3			DA204U	DIODE	
D4			DA1Z02U	DIODE	
IC1			ANZ0000AA	ANALOGUE IC	
IC2			M1M627738F1	MCS-IC	

A indicates safety critical components.

PARTS LIST

* New Parts

Parts without Parts No. are not supplied.

Les articles non mentionnés dans le Parts No. ne sont pas fournis.

Teile ohne Parts No. werden nicht geliefert.

CD PLAYER UNIT(X32-5030-00)

CD MECHANISM ASSY(X92-4100-00)

Ref.No.	A d d	N e w	Parts No.	Description	Dest inati on
IC4			BA5917AFF	ANALOGUE IC	
IC5			TA78L05F	IC(VOLTAGE REGULATOR(+5V))	
IC6			NJM4556MD	IC(OP AMP X2)	
Q1			MCH6101	TRANSISTOR	
Q2			DTC124EUA	DIGITAL TRANSISTOR	
Q3,4			2SA1362(Y)	TRANSISTOR	
Q5			DTC124EUA	DIGITAL TRANSISTOR	
CD MECHANISM ASSY (X92-4100-00)					
1	2A		A10-4822-01	CHASSIS	
2	1B		A10-4225-33	CHASSIS CALKING ASSY	
3	2B		A11-0915-43	SUB-CHASSIS CALKING ASSY	
6	2A		D10-4306-04	ARM ASSY	
7	2A		D10-4305-04	ARM ASSY	
8	3A		D10-3087-44	ARM ASSY	
9	3B		D10-3052-03	SLIDER	
10	3B		D10-3053-04	SLIDER ASSY	
11	2B		D10-3055-04	SLIDER ASSY	
12	2B		D10-3056-04	SLIDER ASSY	
13	1A		D10-3059-24	SLIDER ASSY	
14	1A		D10-3100-04	SLIDER ASSY	
16	1B		D10-4004-04	LEVER ASSY	
17	1B		D10-4006-04	LEVER	
18	1A		D10-4007-04	LEVER	
19	2B		D10-4008-14	LEVER	
20	2A		D10-4009-23	ARM	
21	3A		D10-4010-04	LEVER	
22	3A		D10-4307-04	LEVER ASSY	
24	3B		D10-4050-04	ARM	
25	3A		D10-4038-23	ARM ASSY	
26	2A		D10-4123-24	LEVER ASSY	
27	3A		D13-1442-03	RACK (GEAR)	
29	3B		D13-1231-04	GEAR	
30	3A		D13-1240-04	GEAR	
31	3B		D13-1233-04	GEAR	
32	3B		D13-1234-14	GEAR ASSY	
33	3A		D13-1441-03	GEAR	
34	3B		D13-1232-04	GEAR	
35	3B		D13-1241-04	GEAR	
36	3A		D13-1242-04	GEAR	
37	1B		D13-1243-04	GEAR	
38	1B		D13-1244-04	GEAR	
39	1B		D13-1245-14	GEAR	
40	2A		D13-1246-04	GEAR	
41	2B		D13-1247-04	GEAR	
43	2B		D13-1249-04	GEAR ASSY	
44	2B		D13-1341-04	GEAR ASSY (LEAD SCREW)	
45	1B		D14-0668-04	ROLLER	
46	2A		D14-0670-04	ROLLER	
47	3B		D14-0674-04	ROLLER	
49	3A		D21-2228-14	SHAFT	
50	1A		D21-2229-04	SHAFT	
51	1A		D23-0525-24	RETAINER	
52	2A		D32-0614-04	STOPPER	
53	1B		D39-0223-05	DAMPER (YELLOW)	

Ref.No.	A d d	N e w	Parts No.	Description	Dest inati on
54	2B		D39-0224-05	DAMPER (BLACK)	
55	3B		F09-1246-04	SHEET	
58	3B		F09-1266-14	SHEET	
60	2A		G01-2770-04	EXTENSION SPRING	
61	3A		G01-2771-04	EXTENSION SPRING	
62	3A		G01-2772-24	EXTENSION SPRING	
63	3A		G01-2773-14	EXTENSION SPRING	
64	3A		G01-2774-34	EXTENSION SPRING	
65	1B		G01-2775-04	TORSION COIL SPRING	
66	1B		G01-2776-14	TORSION COIL SPRING	
67	3B		G01-2777-24	TORSION COIL SPRING	
69	2A		G01-2944-04	EXTENSION SPRING	
70	2A		G02-1231-04	FLAT SPRING	
71	2B		G02-1232-24	FLAT SPRING	
72	2A		G02-1241-24	FLAT SPRING	
75	2A		J11-0613-13	CLAMPER	
76	3A		J19-4678-13	HOLDER	
77	2B		J19-4679-24	HOLDER	
78	3B		J21-7684-13	MOUNTING HARDWARE	
79	2B		J21-7686-13	MOUNTING HARDWARE	
80	1B		J21-7690-03	MOUNTING HARDWARE	
82	3A		J84-0107-05	FLEXIBLE PRINTED WIRING BOARD	
83	1A		J90-0757-22	GUIDE	
A	2A		N09-4249-05	MACHINE SCREW (M1.7X2.5,LOCK)	
B	1B		N09-4172-05	TAPPING SCREW (2X3.5,CITITE)	
C	2B		N09-4202-05	STEPPED SCREW	
D	2A		N36-2020-46	FAN HEAD MACHIN SCREW	
E	3A		N09-4294-05	TAPTITE SCREW (BIND P TAPTIT)	
F	3B		N19-2023-04	FLAT WASHER	
G	2A		N19-2059-04	FLAT WASHER	
H	3A		N19-2093-04	FLAT WASHER	
J	2A		N39-2020-46	FAN HEAD MACHIN SCREW	
DM1	3B		T42-0764-04	DC MOTOR ASSY	
DM2	3B		T42-0763-04	DC MOTOR ASSY	
DPL1	2B		T25-0215-05	OPTICAL PICKUP HEAD	

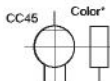
⚠ indicates safety critical components.

PARTS LIST

CAPACITORS

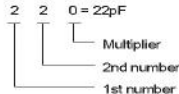
CC 45 TH 1H 220 J
1 2 3 4 5 6

- 1 = Type ... ceramic, electrolytic, etc. 4 = Voltage rating
2 = Shape ... round, square, ect. 5 = Value
3 = Temp. coefficient 6 = Tolerance



* Capacitor value

- 010 = 1pF
100 = 10pF
101 = 100pF
102 = 1000pF = 0.001μF
103 = 0.01μF



• Temperature coefficient

1st Word	C	L	P	R	S	T	U
Color*	Black	Red	Orange	Yellow	Green	Blue	Violet
ppm/°C	0	-80	-150	-220	-330	-470	-750

2nd Word	G	H	J	K	L
ppm/°C	±30	±60	±120	±250	±500

Example : CC45TH = -470 ± 60ppm/°C

• Tolerance (More than 10pF)

Code	C	D	G	J	K	M	X	Z	P	No code
(%)	±0.25	±0.5	±2	±5	±10	±20	+40 -40	+80 -20	+100 -0	More than 10μF -10~+50 Less than 4.7μF -10~+75

(Less than 10pF)

Code	B	C	D	F	G
(pF)	±0.1	±0.25	±0.5	±1	±2

• Voltage rating

1st word \ 2nd word	A	B	C	D	E	F	G	H	J	K	V
0	1.0	1.25	1.6	2.0	2.5	3.15	4.0	5.0	6.3	8.0	-
1	10	12.5	16	20	25	31.5	40	50	63	80	35
2	100	125	160	200	250	315	400	500	630	800	-
3	1000	1250	1600	2000	2500	3150	4000	5000	6300	8000	-

• Chip capacitors

(EX) C C 7 3 F S L 1 H 0 0 0 J
1 2 3 4 5 6 7

(Chip)(CH, RH<UJ, SL)

(EX) C K 7 3 F F 1 H 0 0 0 Z
1 2 3 4 5 6 7

(Chip)(B,F)

- Refer to the table above.
- 1 = Type
2 = Shape
3 = Dimension
4 = Temp. coefficient
5 = Voltage rating
6 = Value
7 = Tolerance

Dimension (Chip capacitors)

Dimension code	L	W	T
Empty	5.6 ± 0.5	5.0 ± 0.5	Less than 2.0
A	4.5 ± 0.5	3.2 ± 0.4	Less than 2.0
B	4.5 ± 0.5	2.0 ± 0.3	Less than 2.0
C	4.5 ± 0.5	1.25 ± 0.2	Less than 1.25
D	3.2 ± 0.4	2.5 ± 0.3	Less than 1.5
E	3.0 ± 0.2	1.6 ± 0.2	Less than 1.25
F	2.0 ± 0.3	1.25 ± 0.2	Less than 1.25
G	1.6 ± 0.2	0.8 ± 0.2	Less than 1.0
H	1.0 ± 0.05	0.5 ± 0.05	0.5 ± 0.05

RESISTORS

• Chip resistor (Carbon)

(EX) R K 7 3 E B 2 B 0 0 0 J
1 2 3 4 5 6 7

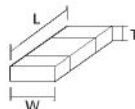
(Chip)(B,F)

• Carbon resistor (Nomal type)

(EX) R D 1 4 B B 2 C 0 0 0 J
1 2 3 4 5 6 7

- 1 = Type 5 = Rating wattage
2 = Shape 6 = Value
3 = Dimension 7 = Tolerance
4 = Temp. coefficient

Dimension



Dimension (Chip resistor)

Dimension code	L	W	T
E	3.2 ± 0.2	1.6 ± 0.2	1.0
F	2.0 ± 0.3	1.25 ± 0.2	1.0
G	1.6 ± 0.2	0.8 ± 0.2	0.5 ± 0.1
H	1.0 ± 0.05	0.5 ± 0.05	0.35 ± 0.05

Rating wattage

Code	Wattage	Code	Wattage	Code	Wattage
1J	1/16W	2C	1/16W	3A	1W
2A	1/10W	2E	1/4W	3D	2W
2B	1/8W	2H	1/2W		